



**KDI SCHOOL**

**WORKING PAPER SERIES**

---

 **국 제 정 책 대 학 원**  
KDI School of Public Policy and Management

# Wage Inequality Dynamics and Trade Exposure in South Korea

Baybars Karacaovali  
University of Hawaii

Chrysostomos Tabakis  
KDI School of Public Policy and Management

*December, 2016*  
*Working Paper 16-21*

**KDI** 국제정책대학원  
KDI School of Public Policy and Management

This paper can be downloaded without charge at:

KDI School of Public Policy and Management Working Paper Series Index:

<http://www.kdischool.ac.kr/new/eng/faculty/working.jsp>

The Social Science Network Electronic Paper Collection:

<http://ssrn.com/abstract=2889547>

# Wage Inequality Dynamics and Trade Exposure in South Korea\*

Baybars Karacaovali<sup>†</sup>      Chrysostomos Tabakis<sup>‡</sup>

November 2016

## Abstract

South Korea has experienced a great U-turn in its inequality trends during the past few decades. In this paper, we explore the role of international trade in its wage inequality dynamics over the 1998–2012 period, using a unique household panel survey. Our analysis reveals that most of the overall wage inequality occurs within sectors and educational groups rather than between them. However, the share in total inequality of the “between” variation across sectors

---

\*The authors would like to thank Juneho Choi, Ji Hyun Jeon, and Araya Mebrahtu Teka for their excellent research assistance. This paper was prepared for the conference “Trade, Growth and Economic Inequality in the Asia–Pacific Region,” organized by Theresa Greaney, Baybars Karacaovali and Kozo Kiyota and hosted by Keio University in May 2016. The authors gratefully acknowledge conference project financial support from The Japan Foundation Center for Global Partnership; and from cosponsors Keio Economic Observatory and MEXT-Supported Program for the Strategic Research Foundation at Private Universities; and from the University of Hawai‘i Center for Japanese Studies, College of Social Sciences, and Economics Department. We also thank our discussant Chul Chung and other conference participants for their valuable comments on our paper. Chrysostomos Tabakis gratefully acknowledges financial support from the KDI School of Public Policy and Management.

<sup>†</sup>*Corresponding author:* University of Hawai‘i at Mānoa, Department of Economics, Saunders Hall 531, 2424 Maile Way, Honolulu HI 96822, USA. Telephone: +1 808–956–7296. Email: baybars@hawaii.edu

<sup>‡</sup>KDI School of Public Policy and Management, Korea. Email: ctabakis@kdischool.ac.kr

and educational groups has moderately increased over time. Furthermore, we document that almost the entire aggregate wage inequality in both manufacturing and services occurs within different trade-exposure categories rather than between them, and this pattern is persistent through time. These results suggest that international trade might not be the main driving force behind the rising wage dispersion in South Korea in the last two decades.

*Keywords:* Wage inequality; trade exposure; South Korea.

*JEL Classification:* E24; F14; F16; J31.

# 1 Introduction

Economic inequality has taken center stage in the public policy debate in recent years. From the Occupy Wall Street movement that started out in New York on September 17, 2011 to the anti-austerity protests in Europe, there has been mounting pressure on politicians and policymakers around the globe to decisively address economic inequality. Against this backdrop, the World Bank lately diverted its focus from per capita GDP growth rates to promoting “shared prosperity” by fostering the income growth of the poorest 40% of the population in every country (World Bank, 2013).

In this paper, we focus on South Korea and explore the role of international trade in its wage inequality dynamics over the 1998–2012 period (i.e., right after the 1997 Asian financial crisis). This is an important endeavor as there has been a great U-turn in the inequality trends in South Korea during the past few decades, with the downward trend of inequality in the late 1980s and early 1990s being reversed in the mid-1990s (GINI, 2013). As a result, the middle class has shrunk from 75.4% of the population in 1990 to 67.5% in 2010 (OECD, 2014).<sup>1</sup> It is not surprising then that President Geun-hye Park pledged to rebuild the middle class as part of her (successful) 2012 campaign (Samy, 2014). At the same time, total trade (i.e., imports + exports) as a percentage of gross domestic product (GDP) dramatically increased from 72.9% in 1998 to 109.9% in 2012, suggesting that international trade might have contributed to raising inequality during the period in question. And our focus on wage inequality is particularly relevant for South Korea as although its overall level of income inequality is close to the average of the OECD economies, its wage inequality is severe, making South Korea one of the worst performers among the OECD countries (GINI, 2013).

We exploit a unique household panel survey, Korean Labor and Income Panel Study (KLIPS), containing detailed information on workers’ personal and employment characteristics. We conduct our analysis in several steps. We first document that aggregate wage inequality initially increased sharply

---

<sup>1</sup>The middle class is defined as those with an income between 50% and 150% of the national median.

and then modestly decreased in South Korea over the 1998–2012 period, reaching its peak around the mid-2000s. We subsequently attempt to quantify the relative importance of alternative possible sources of wage inequality. Our analysis reveals that cross-sectoral wage variation and inter-educational wage dispersion both increased substantially between 1998 and the mid-2000s, and moderately decreased thereafter. However, we also find that most of the overall wage inequality occurs *within* sectors and educational groups rather than *between* sectors and educational groups, which is in contrast with the neoclassical theories of international trade (Heckscher–Ohlin and specific factors models).

Next, we restrict our attention to manufacturing industries’ and service sectors’ trade exposure, as measured by the relative size of their imports and exports. We demonstrate that wage inequality unambiguously increased over our sample period in manufacturing industries characterized by either high exposure to international trade (i.e., having both high import and high export activity) or low trade exposure (i.e., having neither high import nor high export activity). Wage inequality also increased substantially in high-import industries (i.e., industries characterized by high-import only activity) over 1998–2008, but sharply declined thereafter, whereas it remained relatively constant in high-export manufacturing industries (i.e., manufacturing industries having high-export only activity) during the entire 1998–2012 period. Regarding services, we find that wage inequality initially increased sharply within both high- and low-trade-exposure service sectors, but then decreased within the latter, whereas it remained relatively stable within the former. Moreover, we show that almost the entire aggregate wage inequality in South Korea in both manufacturing and services during the 1998–2012 period occurs *within* different trade-exposure categories rather than *between* them, and this pattern is persistent through time, suggesting that international trade might not be the main driving force behind the rising wage dispersion in South Korea in recent years. Finally, we perform numerous robustness checks. It turns out that the conclusions on the contribution of the “within” component to total wage inequality in both manufacturing and services are very robust.

An extensive literature has looked at wage inequality dynamics around the globe. A number of these papers have provided empirical findings suggesting that the neoclassical trade theory can provide at best a partial explanation for the observed wage inequality patterns, which is in line with our findings. For example, many papers have documented that a significant part of the aggregate wage inequality (or the change thereof) can be explained by within-group wage inequality—i.e., wage inequality among workers with the same observable characteristics (for instance, education and labor market experience)—or wage inequality within occupations, sectors, and sector-occupations (see, for example, Juhn et al., 1993; Lemieux, 2006; Autor et al., 2008; Akerman et al., 2013; Helpman et al., forthcoming). Moreover, there is ample evidence that wage inequality increases in both developed and developing countries in the aftermath of trade liberalization (see, for instance, Goldberg and Pavcnik, 2007). This contradicts the Stolper–Samuelson theorem, which predicts that the skilled–unskilled wage ratio should rise in skill-abundant countries but fall in unskilled-abundant countries following trade liberalization.

There is also a limited literature on inequality dynamics in South Korea. For example, Mah (2003) provides evidence that neither changes in the openness ratio nor those in FDI inflows have a significant influence on income distribution in South Korea over 1975–1995. On the other hand, Sato and Fukushige (2009) demonstrate that during the same period (i.e., 1975–1995), the opening of goods markets reduces income inequality in South Korea in both the short run and the long run. We differ from the past literature on inequality dynamics in South Korea in two important respects. First, our focus lies in highlighting that most of the aggregate wage inequality in South Korea occurs within sectors, educational/skill groups, and trade-exposure categories rather than between them. Second, to the best of our knowledge, this is the first paper to exploit the KLIPS dataset.

The remainder of the paper is organized as follows. In Section 2, we introduce our data. In Section 3, we initially present an overview of wage inequality in South Korea over 1998–2012, and then systematically quantify the relative significance of alternative possible sources of wage inequality. Finally, Section 4 concludes.

## 2 Data

The principal source of the data used in this paper is the KLIPS dataset, Waves 1–15, which is a panel survey of Korean households and individual members of the households living in urban areas. The survey is conducted annually under the supervision of the Korea Labor Institute, and our data cover the 1998–2012 period. The original sample (Wave 1 in 1998) consisted of 5,000 urban households (excluding Jeju island) and all members thereof aged 15 years or more. In 2009 (Wave 12), a sample of 1,415 households was added to improve the national representativeness of the data.<sup>2</sup>

The KLIPS dataset is largely divided into the Household dataset and the Individual dataset. The former uses each household as the unit of analysis, and includes data on household member basic demographics (for example, gender, year of birth, marital status, or educational history), household income and expenditures, assets (both real estate and financial assets) and debts, household accommodation, and children’s education. The Individual dataset, which is the one we employ in our analysis, includes information at the household-member (15+) level on basic demographics (see above), state of economic activity, job-searching activities, form of employment (i.e., regular or irregular) and duration of employment contract, type of occupation and industry affiliation, working hours, wages and income, vocational training and certificates, social insurance, job satisfaction, organizational commitment, and other variables (for instance, life satisfaction or state of health).

Our trade data are obtained from two sources. The data on trade in services are extracted from the Extended Balance of Payments Services (EBOPS) 2010 database of the OECD. The rest of the trade data are taken from UN Comtrade, accessed via the WITS software provided by the World Bank.

---

<sup>2</sup>The retention rate of the originally sampled households was 70.3% in 2012 (Wave 15).



## 3 Wage Inequality in South Korea over 1998–2012

### 3.1 Basic Trends

In this subsection, we investigate the basic trends of wage inequality in South Korea over the 1998–2012 period. The focus of our analysis here and throughout the paper is full-time workers, and our earnings measure is the amount of a worker’s average monthly pay. Moreover, to avoid noise in our analysis, we restrict our attention to original household members (i.e., individuals surveyed in 1998 for Wave 1) with at least seven years of (wage) observations and who are employed in one of 15 sectors (to be defined below) with sufficient observations in the KLIPS dataset. This gives us individuals with 7–15 observations each, for a total of 15,726 observations.

We first follow Attanasio et al. (2014) and look at two measures of aggregate wage inequality: (i) the standard deviation of the log wages; and (ii) the difference between the 90th and the 10th percentile of the log wage distribution. As Figure 1A illustrates, the standard deviation of the log wages increased sharply over the 1998–2007 period, and decreased moderately thereafter. The 90–10 differential followed a similar pattern, reaching its peak in 2006 (see Figure 1B).

We then attempt to quantify the relative significance of alternative possible sources of wage inequality. Initially, we calculate sectoral wage premia. To this end, we aggregate the 63 divisions of the Korean Standard Industrial Classification (KSIC), Revision 8, into 21 sectors (see Table A1). Due to data considerations, we only use 15 of them in our analysis, as there are too few observations in KLIPS falling under the remaining six sectors. Table 1 lists these 15 sectors and their employment shares in our sample, along with the 1998–2012 average of the mean log wage in each sector relative to the overall mean log wage. Moreover, Figures 2 and 3 report, respectively, the relative mean log wage by sector and the standard deviation of the relative mean log wage across sectors for each year in our sample period. Our analysis reveals that there is substantial variation in average wages across sectors. For exam-

ple, the sectors of electricity, gas and water supply, financial and insurance services, post and communication, or education pay (on average) substantial wage premia in comparison with the sectors of real estate, rental and leasing activities or hotels and restaurants. Furthermore, Figure 3 demonstrates that cross-sectoral wage variation increased substantially between 1998 and 2006, and modestly decreased afterwards.

We subsequently decompose overall wage inequality ( $T$ ) into a within-sector ( $W$ ) and a between-sector ( $B$ ) component, exactly as in Helpman et al. (forthcoming). In particular, we perform the following decomposition:

$$T_t = W_t + B_t, \quad (1)$$

where:

$$T_t = \frac{1}{N_t} \sum_s \sum_{i \in s} (w_{it} - \bar{w}_t)^2, \quad (2)$$

$$W_t = \frac{1}{N_t} \sum_s \sum_{i \in s} (w_{it} - \bar{w}_{st})^2, \text{ and} \quad (3)$$

$$B_t = \frac{1}{N_t} \sum_s N_{st} (\bar{w}_{st} - \bar{w}_t)^2, \quad (4)$$

where  $i$ ,  $t$  index, respectively, workers and time,  $s$  denotes sector,  $N_t$  is the total number of workers in year  $t$ ,  $N_{st}$  denotes the number of workers employed in sector  $s$  in  $t$ ,  $w_{it}$  is the log wage of worker  $i$  in year  $t$ ,  $\bar{w}_{st}$  is the mean log wage within sector  $s$  in  $t$ , and  $\bar{w}_t$  is the overall average log wage in  $t$ . Figure 4 depicts the results of this decomposition exercise, while Figure 5 displays the contribution of the within-sector component to total log wage inequality. As the latter figure clearly illustrates, the within-sector component of wage inequality accounts for the lion's share of aggregate wage inequality in South Korea over 1998–2012, but this share fell from around 89% at the beginning of our sample period to about 81% at the end of the sample period. The corresponding rise in the share of the between-sector component suggests that international trade might be playing a role in the wage distribution (in line with the neoclassical theories of international trade).

Next, we focus on educational attainment. We first divide workers into three broad categories based on their education: (i) middle school or less; (ii) more than middle school but less than university (i.e., two-year college or just high school); and (iii) university or more (i.e., graduate school). Figure 6 depicts how wage inequality—as measured by the standard deviation of the log wages—changed within each group during 1998–2012. The basic conclusion that we can draw from the figure is that within-group wage inequality increased for all three groups over the period in question, with the university-educated group exhibiting the smallest increase.

We now use more disaggregated educational categories to obtain deeper insights into the impact of education on wage dispersion in South Korea. More specifically, we distinguish between workers who have completed up to: (i) elementary school (or have no schooling at all); (ii) middle school; (iii) high school; (iv) a two-year college; (v) university studies; and (vi) graduate studies (see Table 2). Figure 7 shows the relative mean log wage for each of the six educational categories over 1998–2012, revealing a substantial increase over time in the university premium relative to not having completed high school. Moreover, Figure 8 reports the standard deviation of the relative mean log wage across the six educational categories during the period in question. It is evident from the figure that inter-educational wage variation increased sharply over 1998–2007, and modestly decreased thereafter.

Our last task in this subsection is to decompose overall wage inequality into a within-educational-category and a between-educational-category component, following the same decomposition method as the one described by equations (1)–(4). Our findings are illustrated in Figures 9 and 10. Although the within-educational-category component of wage inequality accounted for an overwhelming share of total wage inequality (almost 79.5%) in 1998, this share gradually declined afterwards achieving a minimum in 2003 (with a value of around 66.5%), and moderately rebounded thenceforth. Therefore, there is some evidence of inter-educational wage variation contributing to the rise in inequality.<sup>3</sup>

---

<sup>3</sup>Note that in a heterogeneous-firm framework, international trade can contribute to within-sector and/or within-occupation wage inequality, as it induces wage dispersion

## 3.2 Trade Exposure and Wage Inequality

Given our focus on the role of international trade in wage inequality in South Korea, in this subsection, we restrict our attention to sectors' exposure to international trade. We start by looking at manufacturing. We divide all International Standard Industrial Classification (ISIC), Revision 3, 3-digit manufacturing industries into four categories based on their exports and imports (see Table 3): (1) industries with high imports only; (2) industries with both high imports and high exports; (3) industries with high exports only; and (4) industries with neither high imports nor high exports. More precisely, a high-import (high-export) industry is defined as an industry the average imports (exports) of which over 1998–2012 are above the 50th percentile of the distribution of average imports (exports) of all ISIC 3-digit manufacturing industries during the period in question.<sup>4</sup> The explicit distinction between export activity and import activity is important as they might be expected to have very different implications for wage inequality. For instance, there is ample empirical evidence that exporting firms tend to pay a wage premium relative to non-exporters (see, for example, Bernard and Jensen, 1995; Schank et al., 2007; Baumgarten, 2013). At the same time, there is evidence that import competition tends to depress domestic wages (see, for instance, Revenga, 1992; Autor et al., 2013). Table 4 reports the total number of observations and the 1998–2012 average of the relative mean log wage for each of the four trade-exposure categories of manufacturing.<sup>5</sup>

Carrying out a similar analysis as before, Figures 11–12 display, respectively, the standard deviation of the log wages and the relative mean log wage

---

*between* firms, which is related to their trade participation (see, for example, Helpman et al., forthcoming). This is an interesting research avenue to pursue, but it is beyond the scope of this paper.

<sup>4</sup>In our robustness analysis (see Subsection 3.3), we experiment with higher thresholds or categorize industries based on their imports and exports over value added.

<sup>5</sup>There might be concern that industry size is strongly correlated with placement into category (4). In particular, a “small” industry could import most of its inputs and export most of its output, but due to its size, it might still be categorized as an industry with neither high imports nor high exports (using our methodology). However, given that our analysis is at a relatively aggregate level (3-digit ISIC) and that South Korea is an advanced, trade-oriented economy, we believe that this is not a major concern.

by trade-exposure category over 1998–2012, while Figure 13 reports the standard deviation of the relative mean log wage across the four trade-exposure categories over the same period. A number of conclusions can be drawn from Figures 11–13. First, wage inequality unambiguously increased over 1998–2012 in industries with either high exposure to international trade (i.e., with both high imports and high exports—category (2) in our classification) or low trade exposure (i.e., with neither high imports nor high exports—category (4) in our classification). Wage inequality also increased substantially in the high-import industries between 1998 and 2008—especially between 2007 and 2008—but sharply declined thereafter, whereas it remained relatively stable in the high-export industries over the entire 1998–2012 period. Second, the industries with low exposure to trade used to pay a significant wage premium relative to all other industries, but this premium disappeared after 2006.<sup>6</sup> Third, the standard deviation of the relative mean log wage across the four trade-exposure categories decreased over our sample period (as illustrated by Figure 13).

Next, we decompose—along the lines of equations (1)–(4)—total wage inequality in manufacturing into two components: a within-trade-exposure-category component and a between-trade-exposure-category one. Our results are reported in Figures 14 and 15. The “within” component accounts for nearly the entire level of aggregate wage inequality in South Korean manufacturing over 1998–2012, reaching frequently astounding shares in excess of 99%. Moreover, the share of the “between” component remained stable throughout this entire period, implying that international trade may not be the (major) culprit in the rise in wage inequality.

We now turn to the service sectors (of Table 1) and perform the same categorization exercise as above on the basis of their trade exposure. Due to lack of data availability, we are forced to drop the following four sectors: (i) electricity, gas and water supply; (ii) wholesale and retail sale trade; (iii) hotels and restaurants; and (iv) real estate, rental and leasing activities. The classification of the remaining 10 service sectors based on their imports

---

<sup>6</sup>In fact, it is the high-export industries that tend to pay a wage premium (relative to the rest of industries) in the post-2006 period.

and exports is shown in Table 5, while Table 6 lists the total number of observations and the relative mean log wage averaged over 1998–2012 for each trade-exposure category of services. It should be noted here that there is no service sector that is characterized by high imports but, at the same time, has low export activity (using the 50th-percentile threshold), and vice versa. As a result, the service sectors are divided into only two trade-exposure categories: (1) sectors with neither high imports nor high exports; and (2) sectors with both high imports and high exports.

We carry out the same analysis as for manufacturing and report the results in Figures 16–20. A number of important observations can be made regarding the service sectors in South Korea during the 1998–2012 period. First, Figure 16 shows that wage inequality initially increased sharply within both trade-exposure categories, but then decreased in the low-trade-exposure service sectors (i.e., category (1) in our classification), while it remained relatively stable in the high-trade-exposure ones (i.e., category (2) in our classification). Second, the service sectors with low exposure to trade pay on average a significant wage premium relative to the high-trade-exposure sectors (Figure 17). The premium paid by the former (i.e., the low-trade-exposure sectors) was particularly high during 2001–2003, leading to a surge during these years in the standard deviation of the relative mean log wage across the two trade-exposure categories (as illustrated by Figure 18). Third, the within-trade-exposure-category component of wage inequality accounts steadily for more than 95.5% of total wage inequality in the service sectors of South Korea over our sample period, and apart from a small decline during 2001–2003, the share of the “between” component is again relatively stable through time exactly as in the case of manufacturing (Figures 19 and 20).

In brief, our results so far demonstrate that almost the entire aggregate wage inequality in South Korea in both manufacturing and services during the 1998–2012 period can be explained by wage inequality within different trade-exposure categories rather than between them. Furthermore, the contribution to total inequality of the “between” variation across trade-exposure categories is fairly stable during the period in question. These findings suggest that international trade might not be the main driving force behind the

increase in wage dispersion in South Korea in recent years.

### 3.3 Robustness

We now carry out a series of robustness checks to assess the generality of the aforementioned conclusions.<sup>7</sup> First, we delve further into the skill premium. More specifically, we divide workers into skilled and unskilled, where the former group includes workers who have attended at least a two-year college. We find that for both groups of workers, wage inequality initially increased substantially and then moderately decreased. Furthermore, the skill wage premium increased significantly over our sample period, reaching its peak in 2006 and then slightly declining. And our usual decomposition exercise reveals that the within-skill-group component of wage inequality typically accounts for more than 80% of total wage inequality in South Korea over the period in question—exhibiting though a U-curve pattern—which is well in line with our previous findings. More importantly, we subsequently decompose aggregate wage inequality in manufacturing and services (separately) into a within-trade-exposure-category-skill-group component and a between-trade-exposure-category-skill-group component. Even allowing for such a degree of disaggregation, our results are very robust. As Figures 21–24 illustrate, the “within” component accounts consistently for more than 82% of total wage inequality in both manufacturing and services over 1998–2012. However, this share has declined to some extent over time for both manufacturing and services, which is consistent with the evolution of the contribution to aggregate inequality of the between-educational-category wage variation as illustrated by Figure 10.

We next restrict our attention to manufacturing and redivide all ISIC 3-digit manufacturing industries into our four (manufacturing) trade-exposure categories but using a 75th-percentile threshold instead of a 50th-percentile one. In other words, a high-import (high-export) industry is now defined as an industry the average imports (exports) of which during the 1998–2012 period are above the 75th percentile of the distribution of average imports

---

<sup>7</sup>The complete robustness analysis is available from the authors upon request.

(exports) of all ISIC 3-digit manufacturing industries over the period in question. Our qualitative conclusions on the role of trade in wage inequality in South Korea are unchanged as the within-trade-exposure-category component of wage inequality still accounts for 93% or more of total wage inequality in South Korean manufacturing over 1998–2012. The only notable difference is that when using the 75th-percentile threshold for our sorting, the high-export industries tend to pay a wage premium relative to all other industries over our entire sample period rather than only in the post-2006 period.

We also experiment with an even higher threshold (90th percentile) or categorize industries based on their imports and exports over value added (while using a 50th-percentile threshold). Our results regarding the impact of trade on wage inequality are qualitatively unaffected, even though the contribution of the “within” component to total inequality in manufacturing is somewhat lower (but still quite high).<sup>8</sup>

Finally, we turn to the service sectors and redivide them into our two (service) trade-exposure categories while using a 90th-percentile threshold rather than a 50th-percentile one.<sup>9</sup> It turns out that the conclusions we reached previously on the wage premium paid by the low-trade-exposure service sectors and on the contribution of the “within” component to aggregate wage inequality in services are still valid.

## 4 Conclusions

In this paper, we have explored the role of international trade in the wage inequality dynamics in South Korea over the 1998–2012 period. This is an important endeavor as South Korea has experienced a great U-turn in its inequality trends during the past few decades, while at the same time, its total trade as a percentage of GDP has skyrocketed.

---

<sup>8</sup>Note here that when looking at imports and exports over value added, it is the industries with both high imports and high exports that tend to pay a wage premium relative to the rest of industries over our sample period.

<sup>9</sup>Note here that no service sector has average imports (exports) between the 75th and 90th percentiles of the distribution of average imports (exports) of all service sectors during 1998–2012.



We have exploited a unique household panel survey containing detailed information on workers' personal and employment characteristics. Our analysis reveals that aggregate wage inequality initially increased sharply and then moderately decreased in South Korea over our sample period, reaching its peak around the mid-2000s. In an attempt to quantify the relative significance of alternative possible sources of wage inequality, we have demonstrated that cross-sectoral wage variation and inter-educational wage dispersion both increased substantially between 1998 and the mid-2000s, and modestly decreased afterwards. However, we have also shown that most of the aggregate wage inequality occurs within sectors and educational groups rather than between sectors and educational groups.

When looking at trade exposure, wage inequality unambiguously increased in manufacturing industries characterized by either high or low trade exposure, as well as in high-trade-exposure service sectors. What is more important, though, is that in both manufacturing and services, (i) almost the entire overall wage inequality occurs within different trade-exposure categories rather than between them; and (ii) the share in total inequality of the “between” variation across trade-exposure categories is relatively stable over the entire sample period. These findings suggest that international trade might not be the main driving force behind rising wage dispersion in South Korea in recent years. Finally, our analysis establishes that the conclusions on the contribution of the “within” component to aggregate wage inequality in manufacturing as well as in services are very robust.

## References

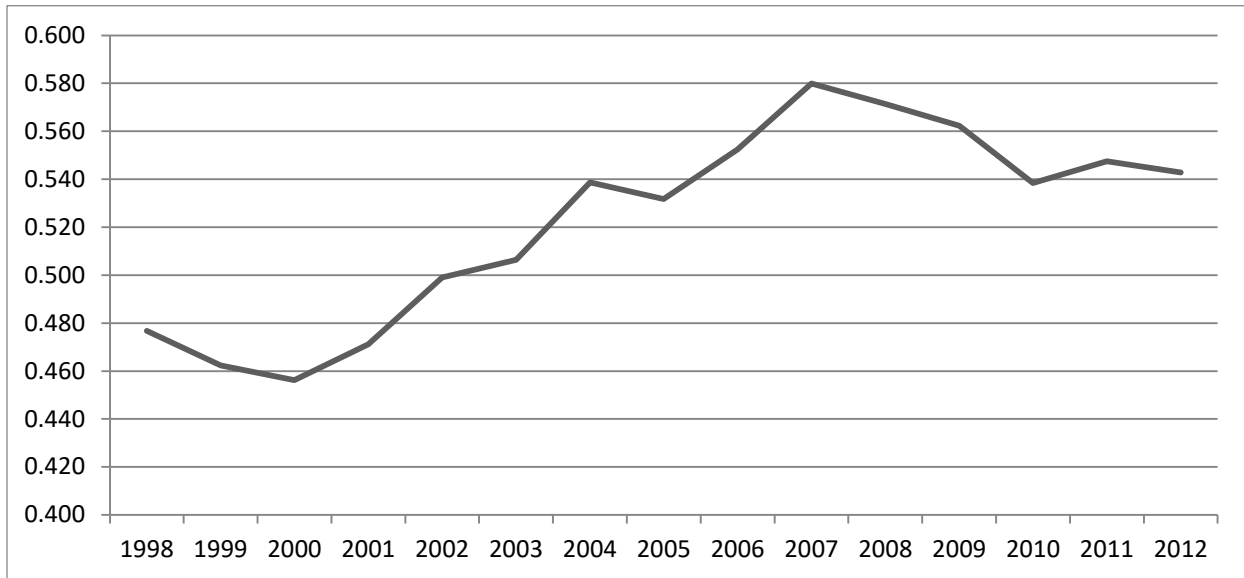
- [1] Akerman, Anders, Elhanan Helpman, Oleg Itskhoki, Marc-Andreas Muendler, and Stephen Redding (2013). “Sources of Wage Inequality.” *American Economic Review: Papers & Proceedings*, 103, 214–219.
- [2] Attanasio, Orazio, Pinelopi K. Goldberg, and Nina Pavcnik (2014). “Trade Reforms and Wage Inequality in Colombia.” *Journal of Development Economics*, 74, 331–366.

- [3] Autor, David H., David Dorn, and Gordon H. Hanson (2013). “The China Syndrome: Local Labor Market Effects of Import Competition in the United States.” *American Economic Review*, 103, 2121–2168.
- [4] Autor, David H., Lawrence F. Katz, and Melissa S. Kearney (2008). “Trends in U.S. Wage Inequality: Revising the Revisionists.” *The Review of Economics and Statistics*, 90, 300–323.
- [5] Baumgarten, Daniel (2013). “Exporters and the Rise in Wage Inequality: Evidence from German Linked Employer–Employee Data.” *Journal of International Economics*, 90, 201–217.
- [6] Bernard, Andrew B., and J. Bradford Jensen (1995). “Exporters, Jobs, and Wages in U.S. Manufacturing: 1976–1987.” *Brookings Papers on Economic Activity. Microeconomics*, 1995, 67–119.
- [7] GINI (2013). *Growing Inequality and Its Impacts in Korea: Country Report for Korea*. GINI Project.
- [8] Goldberg, Pinelopi K., and Nina Pavcnik (2007). “Distributional Effects of Globalization in Developing Countries.” *Journal of Economic Literature*, 45, 39–82.
- [9] Helpman, Elhanan, Oleg Itskhoki, Marc-Andreas Muendler, and Stephen J. Redding (forthcoming). “Trade and Inequality: From Theory to Estimation.” *Review of Economic Studies*.
- [10] Juhn, Chinhui, Kevin M. Murphy, and Brooks Pierce (1993). “Wage Inequality and the Rise in Returns to Skill.” *Journal of Political Economy*, 101, 410–442.
- [11] Lemieux, Thomas (2006). “Increasing Residual Wage Inequality: Composition Effects, Noisy Data, or Rising Demand for Skill?” *American Economic Review*, 96, 461–498.
- [12] Mah, Jai S. (2003). “A Note on Globalization and Income Distribution—The Case of Korea, 1975–1995.” *Journal of Asian Economics*, 14, 157–164.

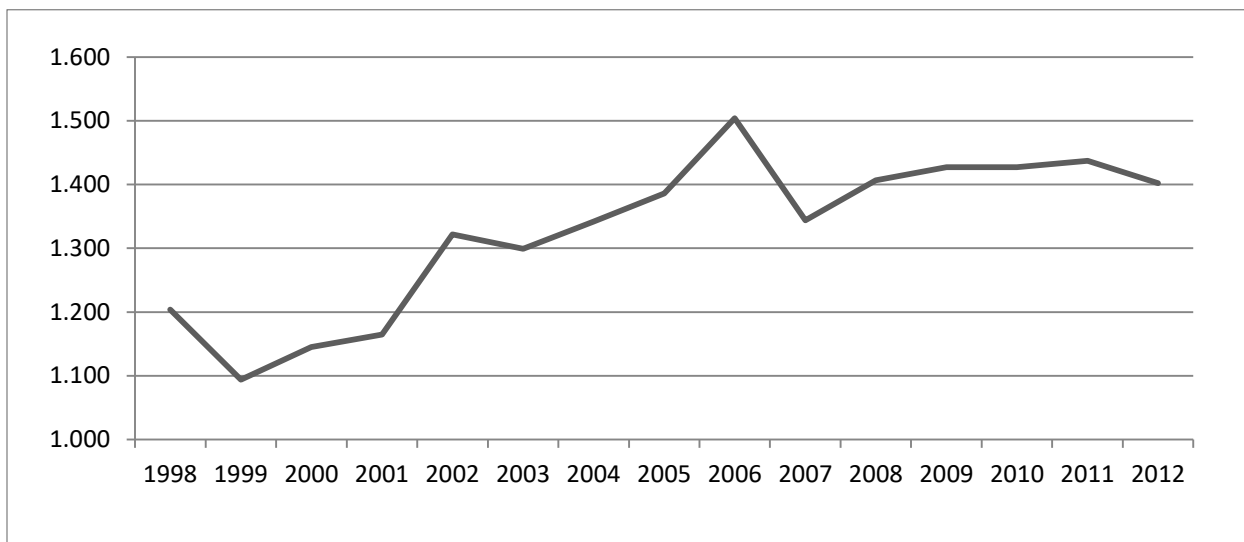
- [13] OECD (2014). *OECD Economic Surveys: Korea*. Economic and Development Review Committee, OECD.
- [14] Revenga, Ana L. (1992). “Exporting Jobs? The Impact of Import Competition on Employment and Wages in U.S. Manufacturing.” *The Quarterly Journal of Economics*, 107, 255–284.
- [15] Samy, Yiagadeesen (2014). “Globalization, Income Inequality, and Deindustrialization: The Case of South Korea.” Korea Economic Institute of America (KEI) Academic Paper Series.
- [16] Sato, Sumie, and Mototsugu Fukushige (2009). “Globalization and Economic Inequality in the Short and Long Run: The Case of South Korea 1975–1995.” *Journal of Asian Economics*, 20, 62–68.
- [17] Schank, Thorsten, Claus Schnabel, and Joachim Wagner (2007). “Do Exporters Really Pay Higher Wages? First Evidence from German Linked Employer–Employee Data.” *Journal of International Economics*, 72, 52–74.
- [18] World Bank (2013). *Inequality in Focus*, Vol. 2, No. 3. Poverty Reduction and Equity Department, World Bank.

**FIGURE 1. AGGREGATE WAGE INEQUALITY (1998–2012)**

**PANEL A. Standard Deviation of Log Wages**



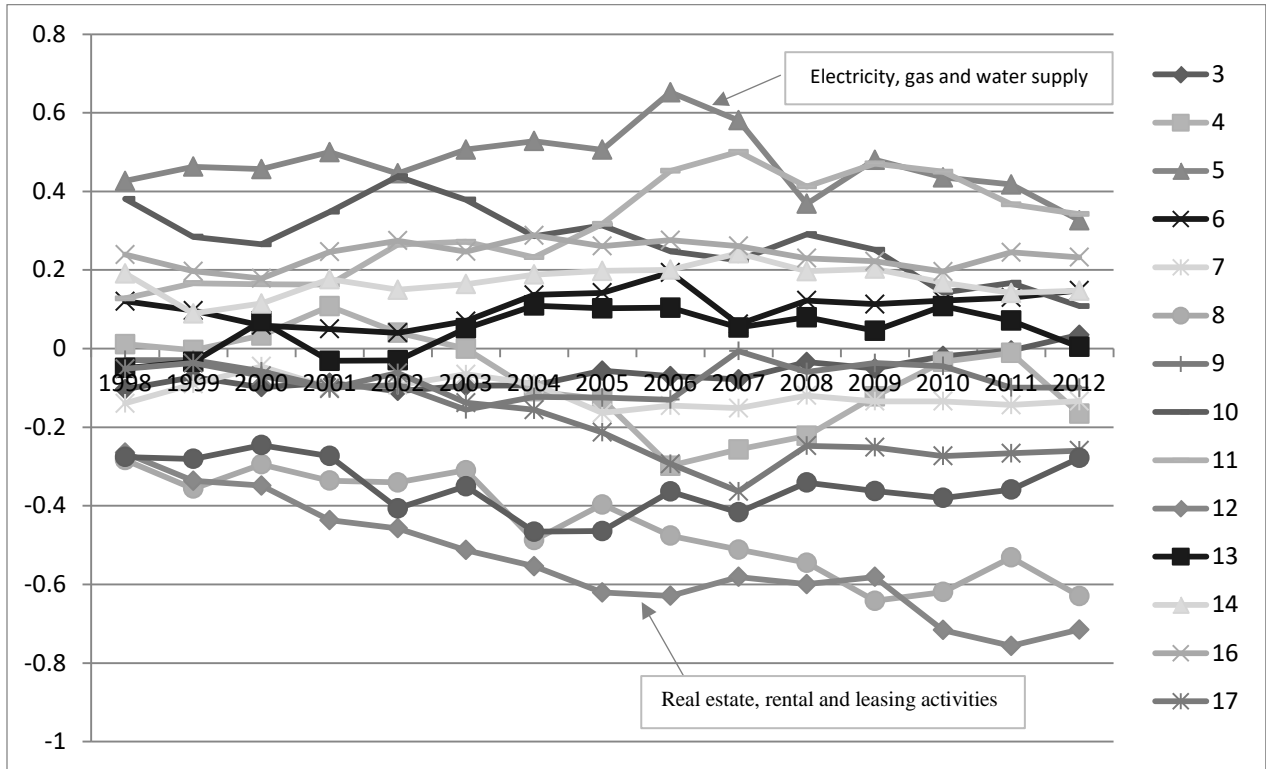
**PANEL B. Difference between 90<sup>th</sup> and 10<sup>th</sup> Percentiles of Log Wages**



**Source:** Authors' calculations using Korean Labor and Income Panel Study (KLIPS)

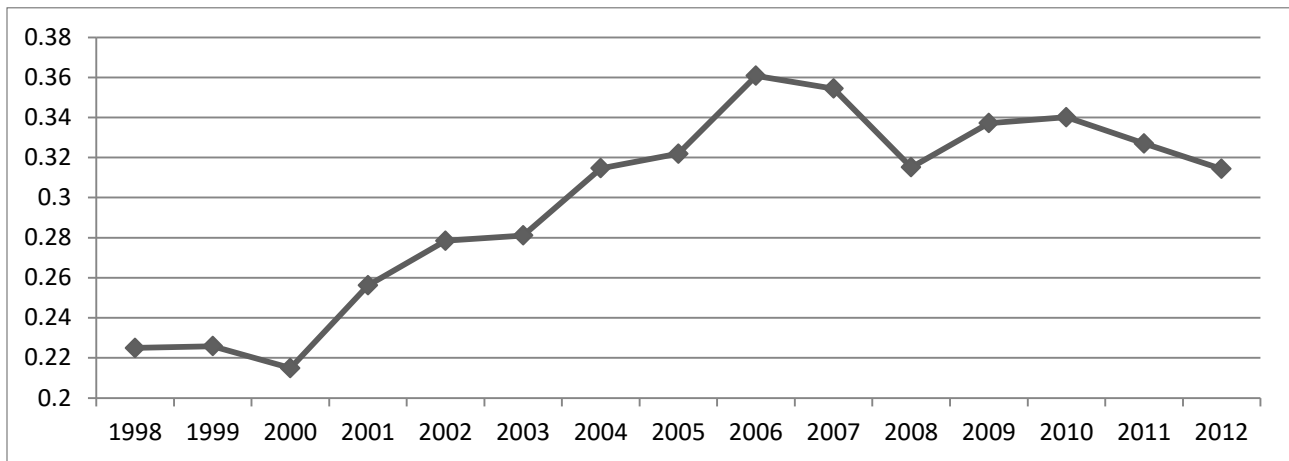
**Note:** KLIPS is the main source of data in all figures and tables unless otherwise noted.

**FIGURE 2. RELATIVE MEAN LOG WAGE BY SECTOR**



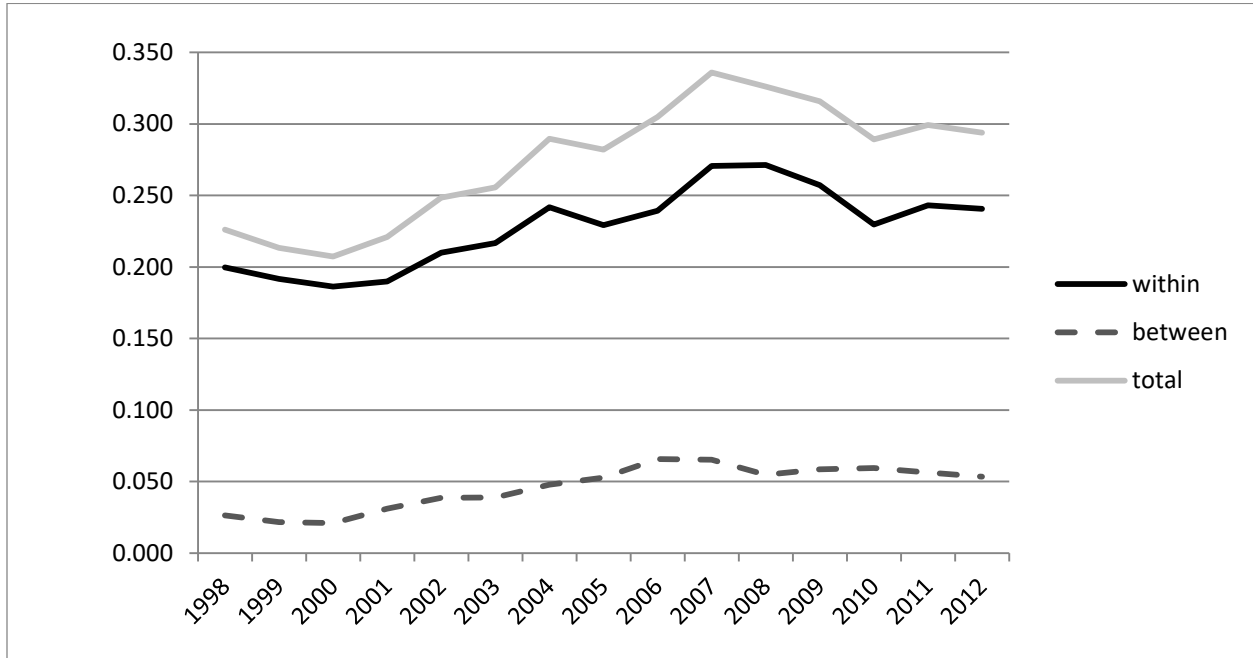
**Notes:** 1. The sectors are described in Table 1.  
 2. The difference between average log wage for each sector relative to overall average log wage for the whole sample.

**FIGURE 3. STANDARD DEVIATION OF RELATIVE MEAN LOG WAGE ACROSS SECTORS**

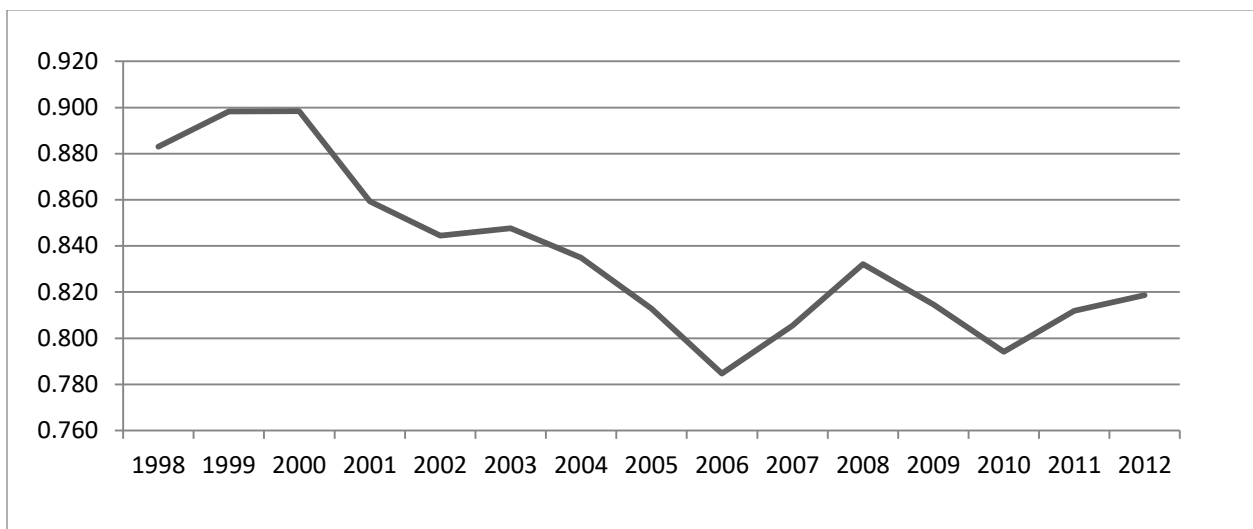


**Note:** Standard deviation of the difference between average log wage for each sector relative to overall average log wage for the whole sample.

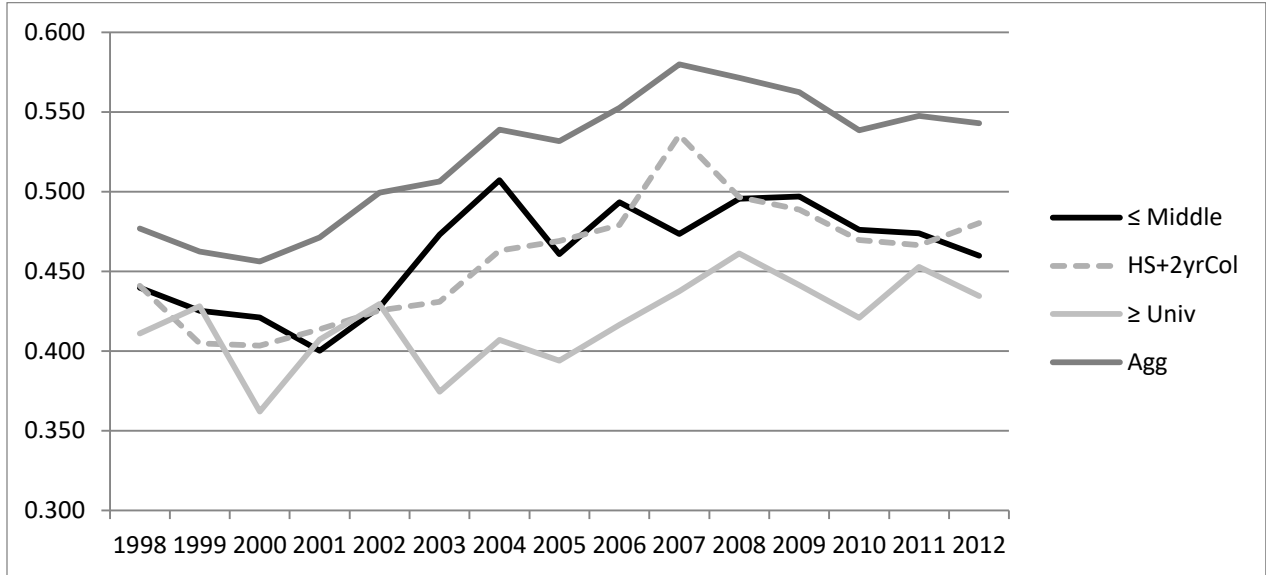
**FIGURE 4. WAGE INEQUALITY DECOMPOSITION:  
WITHIN VERSUS BETWEEN SECTORS**



**FIGURE 5. SHARE OF WITHIN-SECTOR WAGE INEQUALITY  
IN TOTAL INEQUALITY**

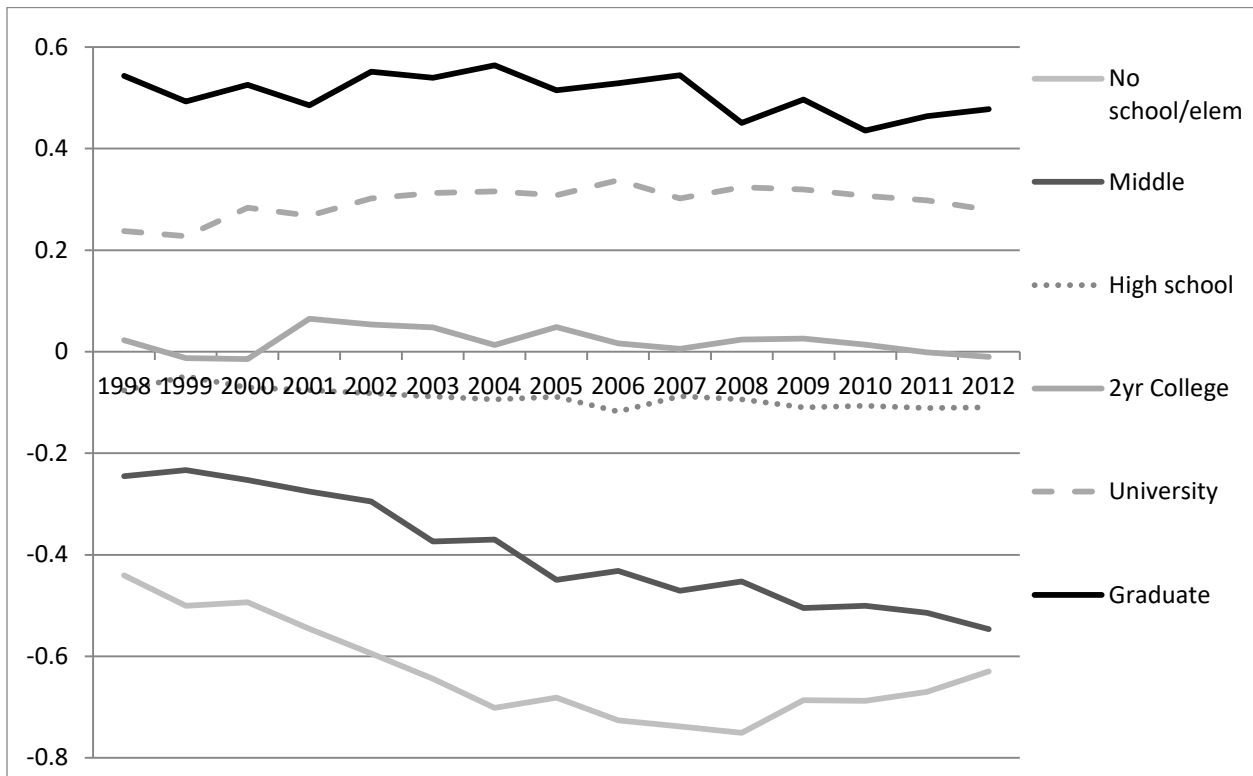


**FIGURE 6. WAGE INEQUALITY WITHIN BROAD EDUCATIONAL CATEGORIES**



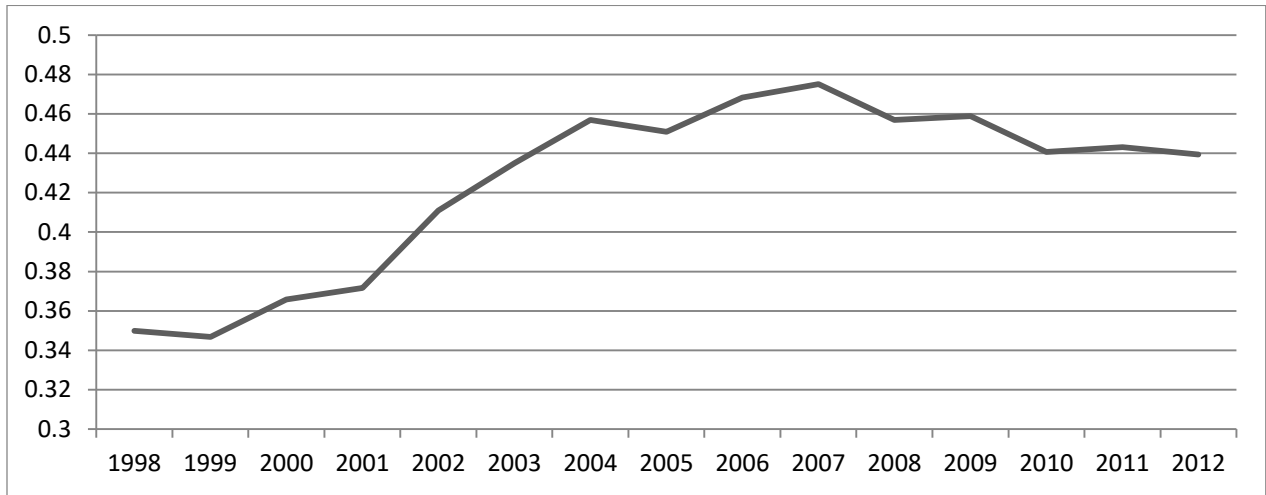
**Note:** Standard deviation of log wages within each broad educational category.

**FIGURE 7. RELATIVE MEAN LOG WAGE BY EDUCATIONAL ATTAINMENT**



**Note:** The difference between average log wage for each educational category relative to overall average log wage for the whole sample.

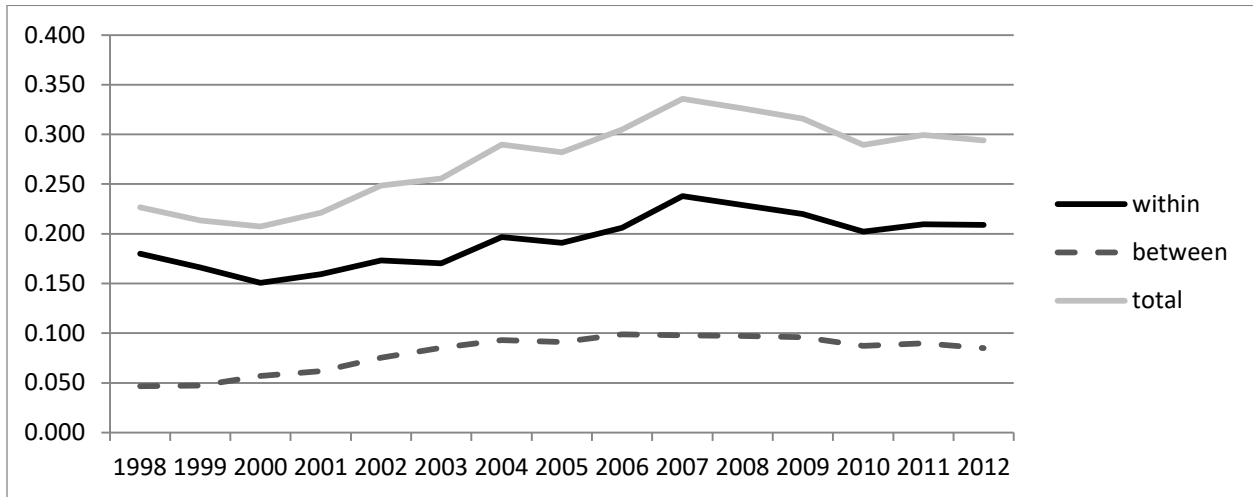
**FIGURE 8. STANDARD DEVIATION OF RELATIVE MEAN LOG WAGE  
ACROSS EDUCATIONAL CATEGORIES**



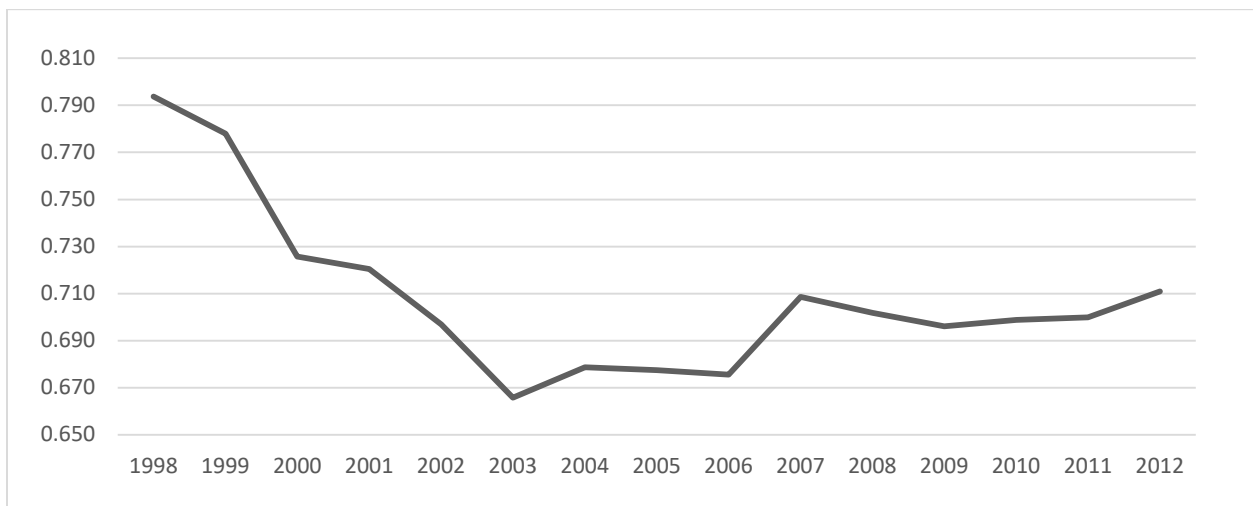
**Note:** Standard deviation of the difference between average log wage for each educational category relative to overall average log wage for the whole sample.



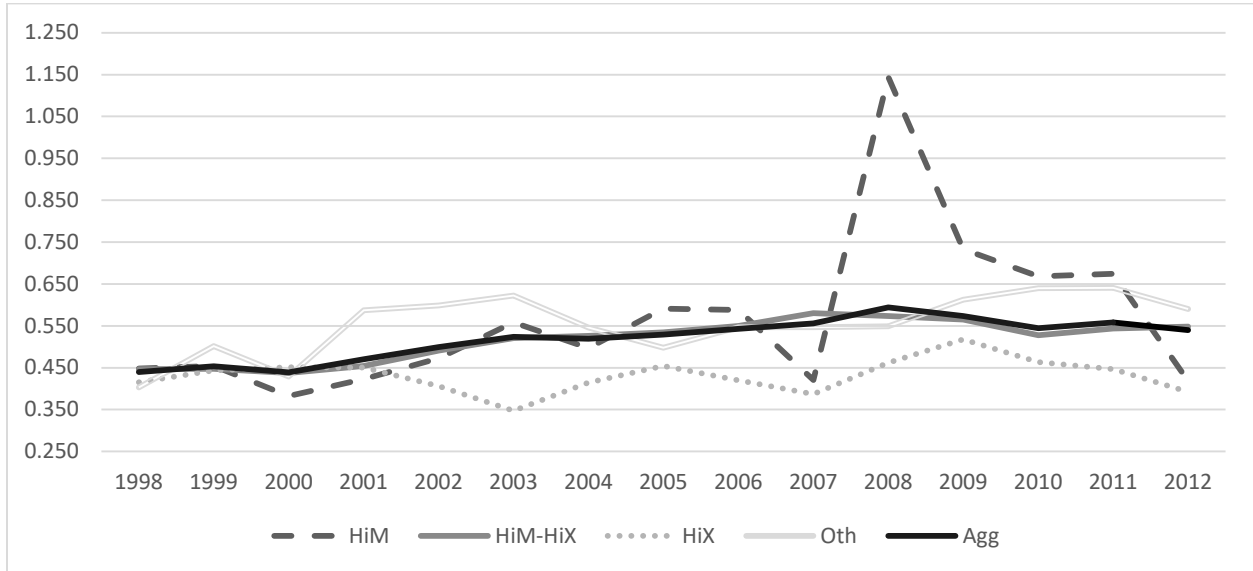
**FIGURE 9. WAGE INEQUALITY DECOMPOSITION:  
WITHIN VERSUS BETWEEN EDUCATIONAL CATEGORIES**



**FIGURE 10. SHARE OF WITHIN-EDUCATIONAL-CATEGORY WAGE INEQUALITY  
IN TOTAL INEQUALITY**

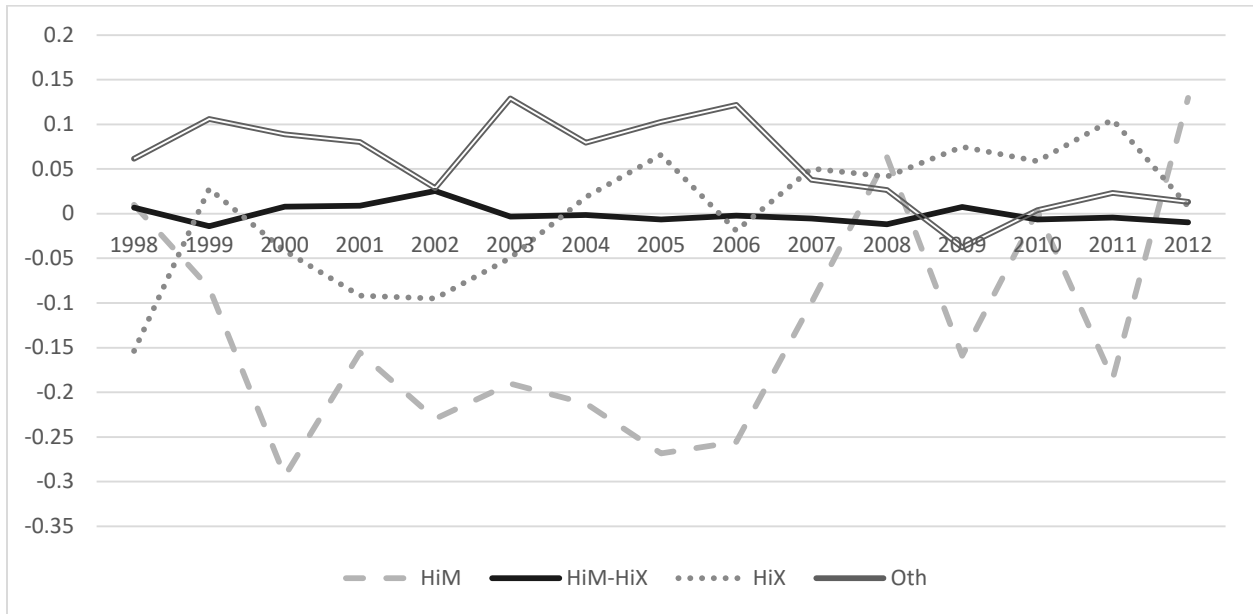


**FIGURE 11. WAGE INEQUALITY WITHIN MANUFACTURING SECTORS BY TRADE EXPOSURE**



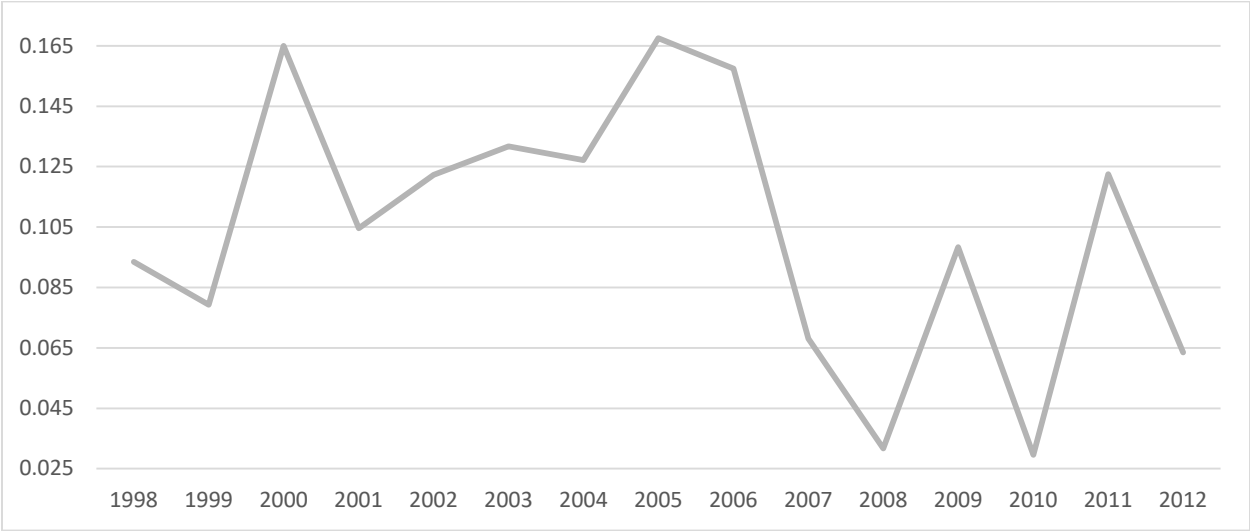
**Notes:** 1. Standard deviation of log wages within each trade-exposure category in manufacturing.  
 2. The trade exposure of manufacturing sectors is indicated in Table 3.

**FIGURE 12. RELATIVE MEAN LOG WAGE BY TRADE EXPOSURE IN MANUFACTURING**



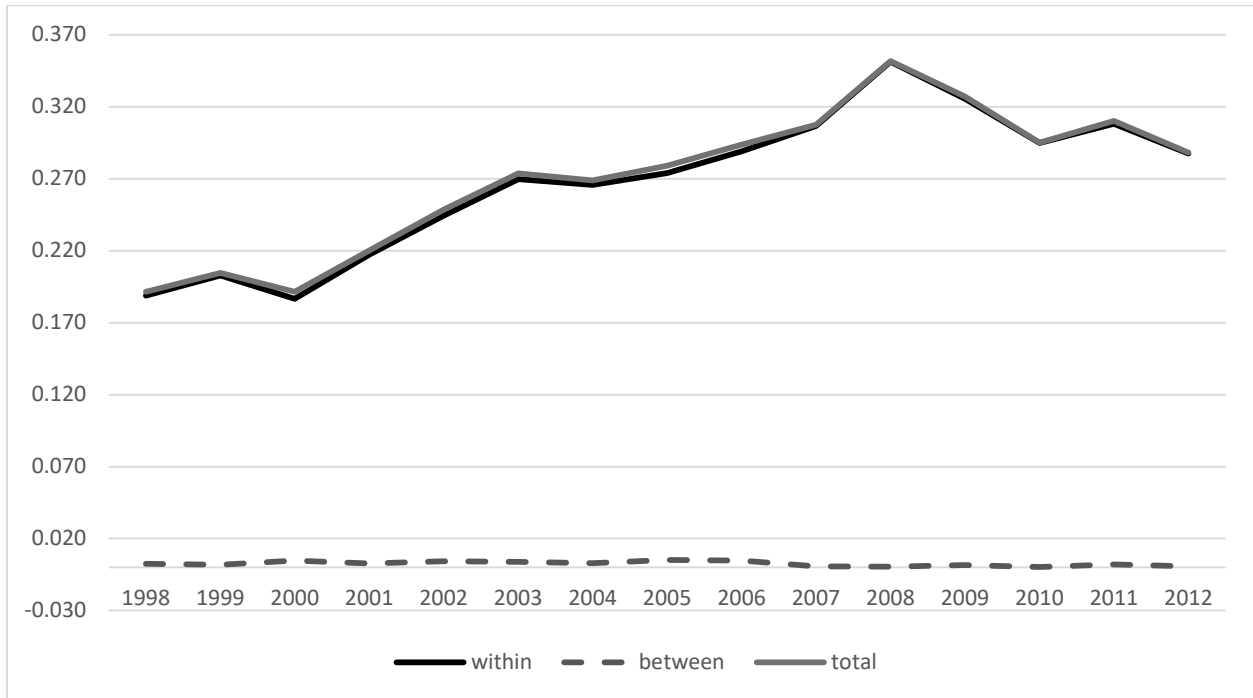
**Note:** The difference between average log wage for each trade-exposure category relative to overall average log wage for the whole sample of manufacturing sectors.

**FIGURE 13. STANDARD DEVIATION OF RELATIVE MEAN LOG WAGE ACROSS TRADE-EXPOSURE CATEGORIES IN MANUFACTURING**

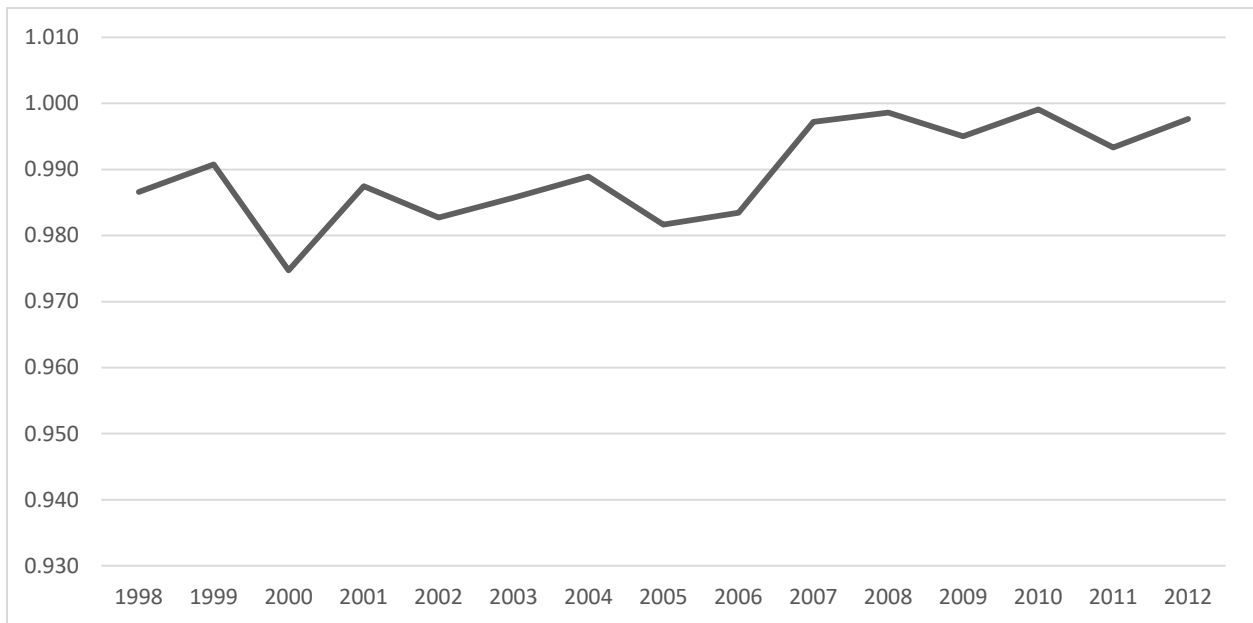


**Note:** Standard deviation of the difference between average log wage for each trade-exposure category relative to overall average log wage for the whole sample of manufacturing sectors.

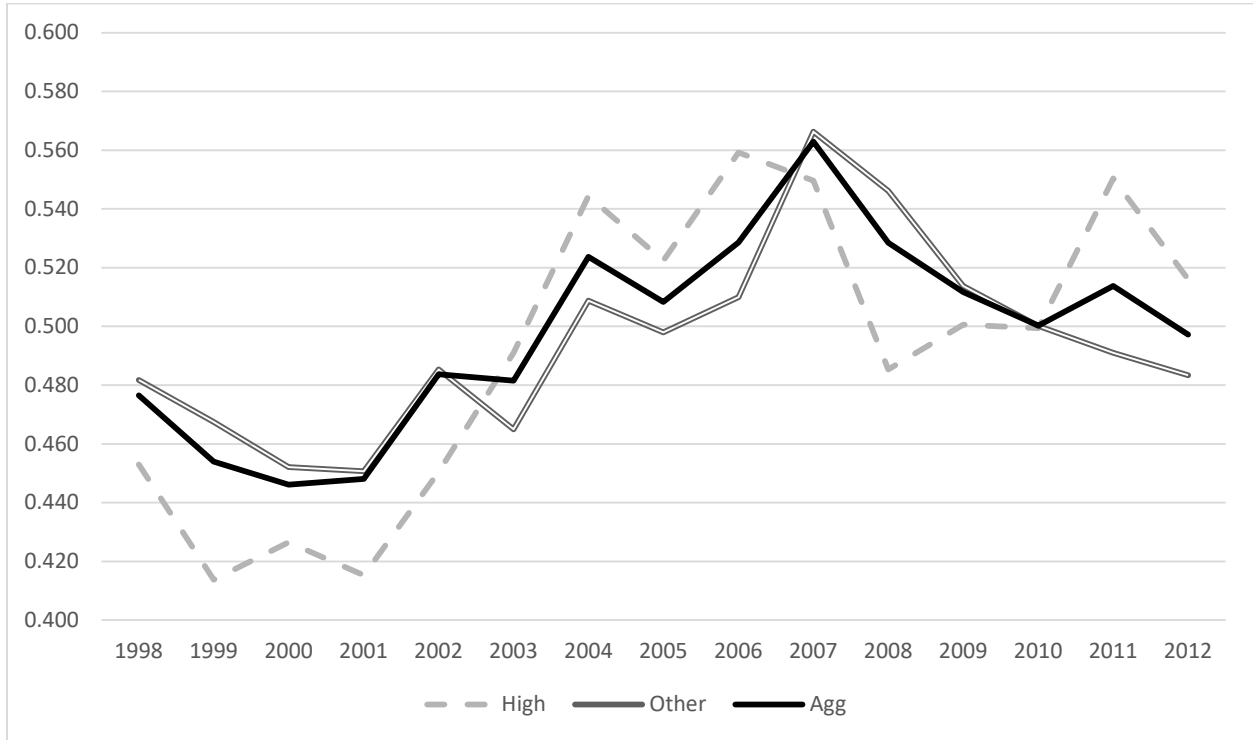
**FIGURE 14. WAGE INEQUALITY DECOMPOSITION: WITHIN VERSUS BETWEEN CATEGORIES OF TRADE EXPOSURE IN MANUFACTURING**



**FIGURE 15. SHARE OF WITHIN-TRADE-EXPOSURE-CATEGORY WAGE INEQUALITY IN TOTAL INEQUALITY IN MANUFACTURING**

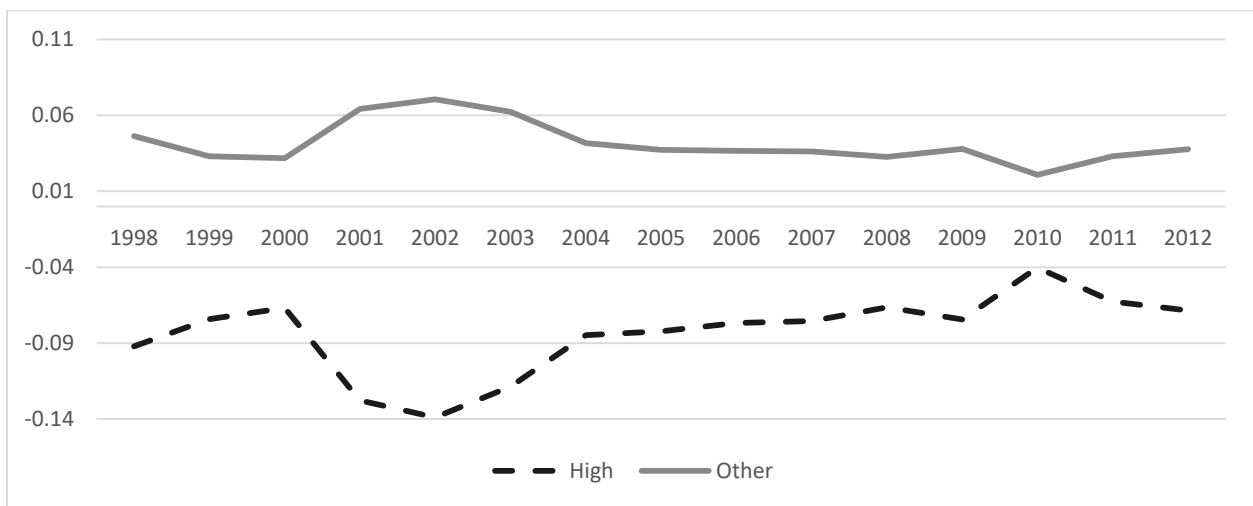


**FIGURE 16. WAGE INEQUALITY WITHIN SERVICE SECTORS BY TRADE EXPOSURE**



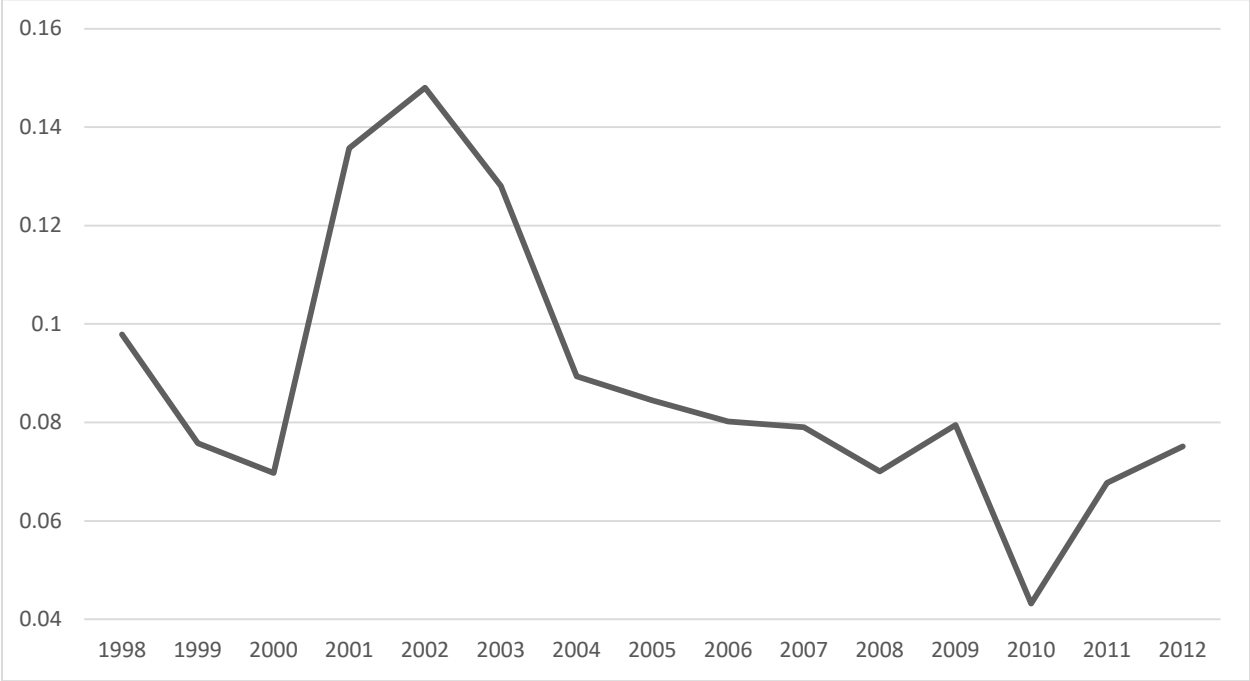
**Notes:** 1. Standard deviation of log wages within each trade-exposure category in services.  
 2. The trade exposure of service sectors is indicated in Table 5.

**FIGURE 17. RELATIVE MEAN LOG WAGE BY TRADE EXPOSURE IN SERVICES**



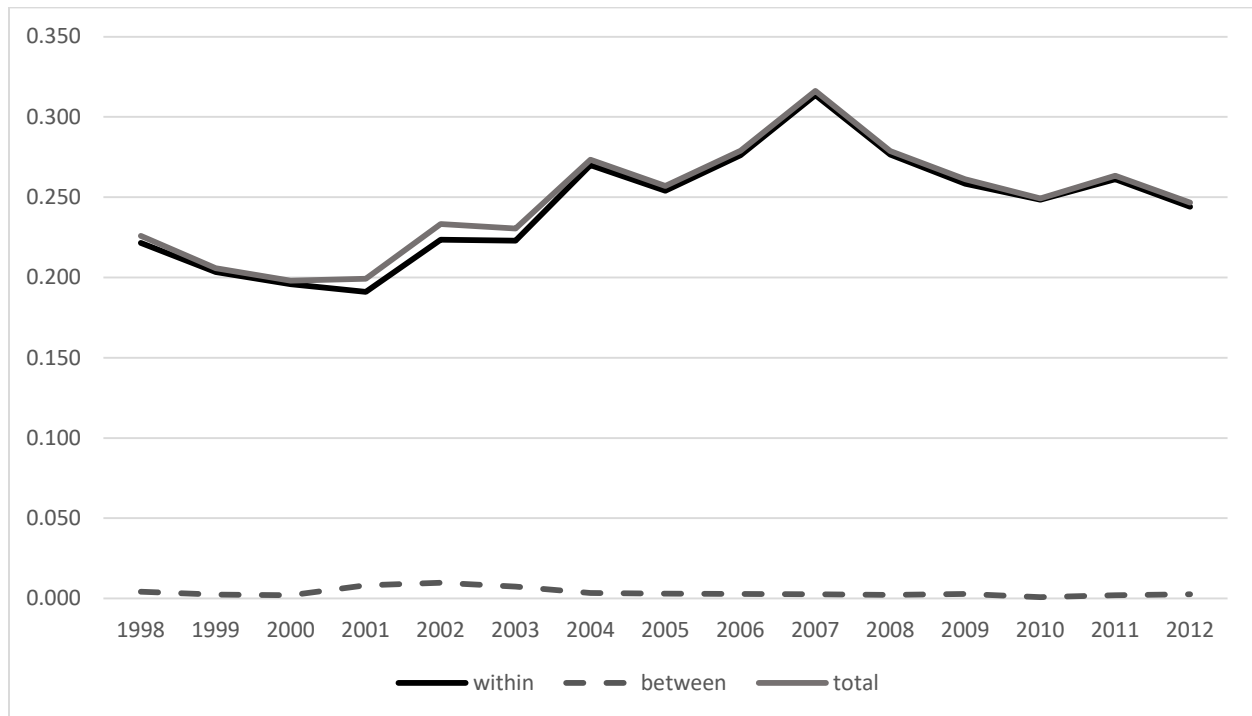
**Note:** The difference between average log wage for each trade-exposure category relative to overall average log wage for the whole sample of service sectors.

**FIGURE 18. STANDARD DEVIATION OF RELATIVE MEAN LOG WAGE ACROSS TRADE-EXPOSURE CATEGORIES IN SERVICES**

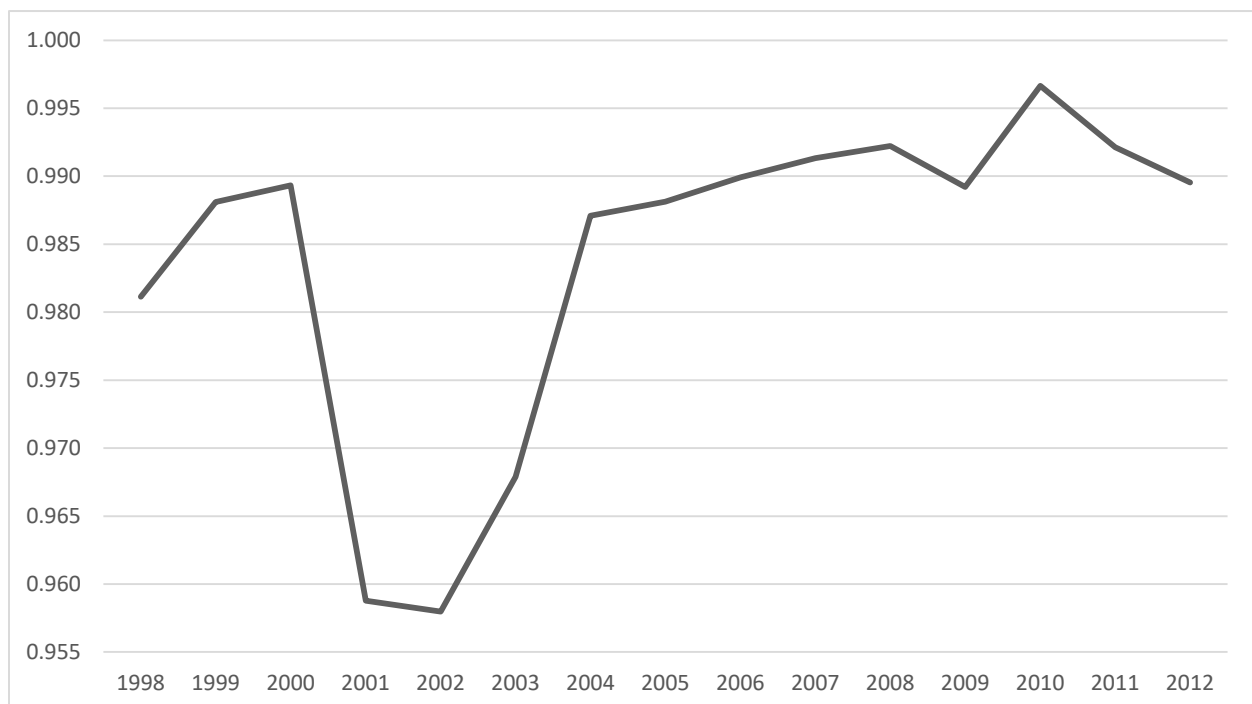


**Note:** Standard deviation of the difference between average log wage for each trade-exposure category relative to overall average log wage for the whole sample of service sectors.

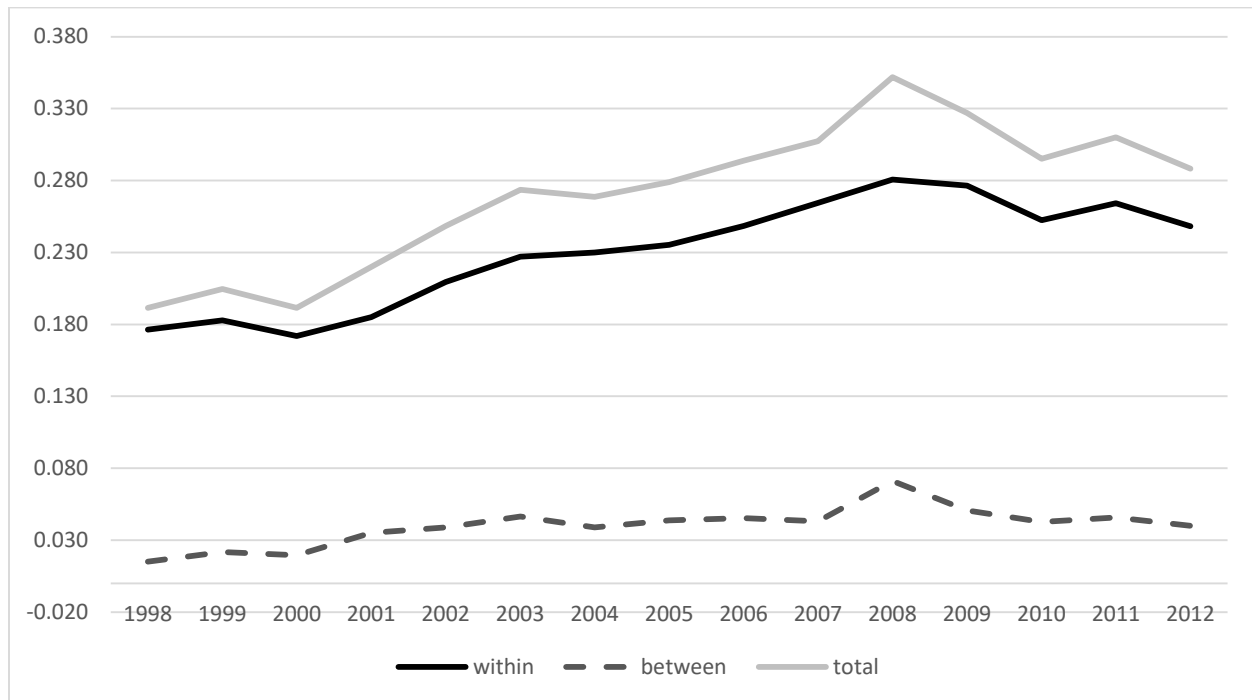
**FIGURE 19. WAGE INEQUALITY DECOMPOSITION: WITHIN VERSUS BETWEEN CATEGORIES OF TRADE EXPOSURE IN SERVICES**



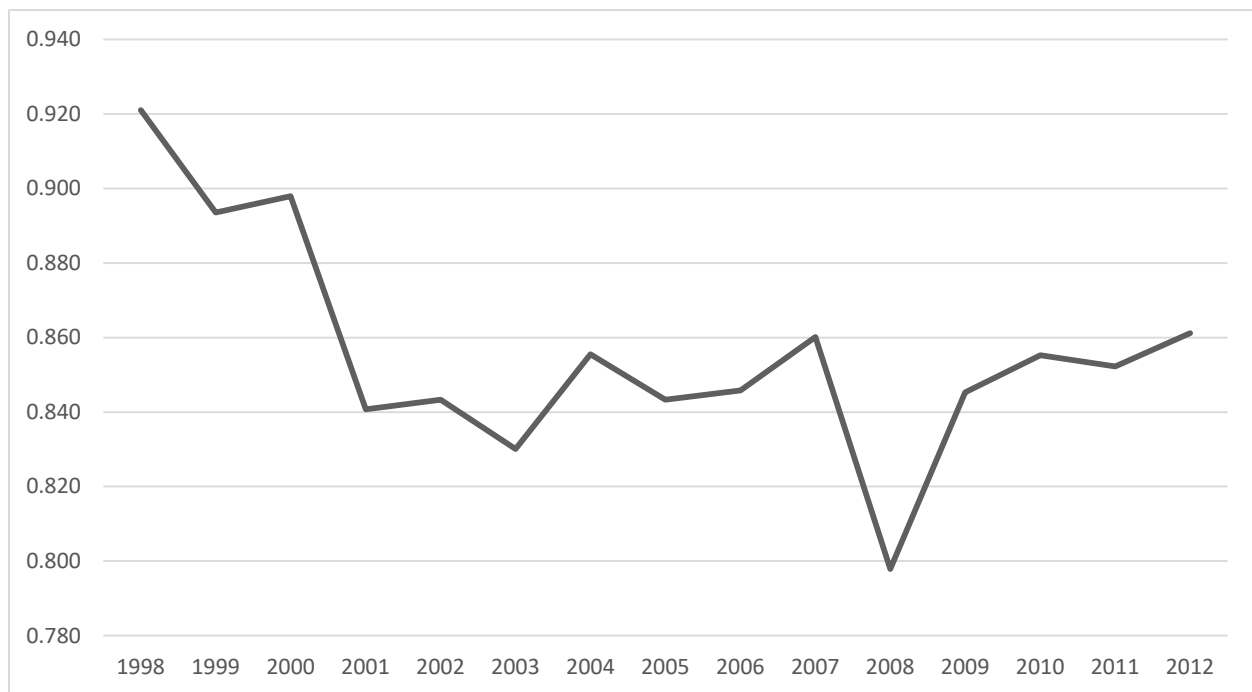
**FIGURE 20. SHARE OF WITHIN-TRADE-EXPOSURE-CATEGORY WAGE INEQUALITY IN TOTAL INEQUALITY IN SERVICES**



**FIGURE 21. WAGE INEQUALITY DECOMPOSITION: WITHIN VERSUS BETWEEN CATEGORIES OF TRADE EXPOSURE–SKILL GROUP IN MANUFACTURING**

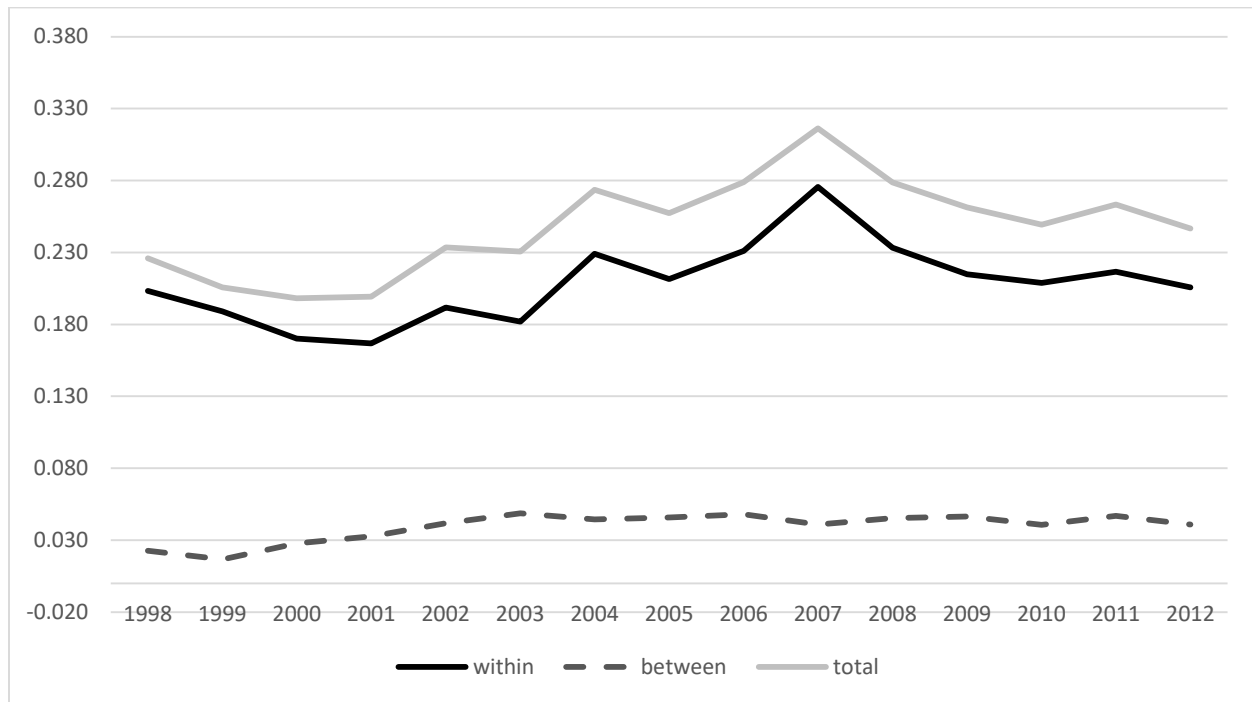


**FIGURE 22. SHARE OF WITHIN-TRADE-EXPOSURE-CATEGORY-SKILL-GROUP WAGE INEQUALITY IN TOTAL INEQUALITY IN MANUFACTURING**

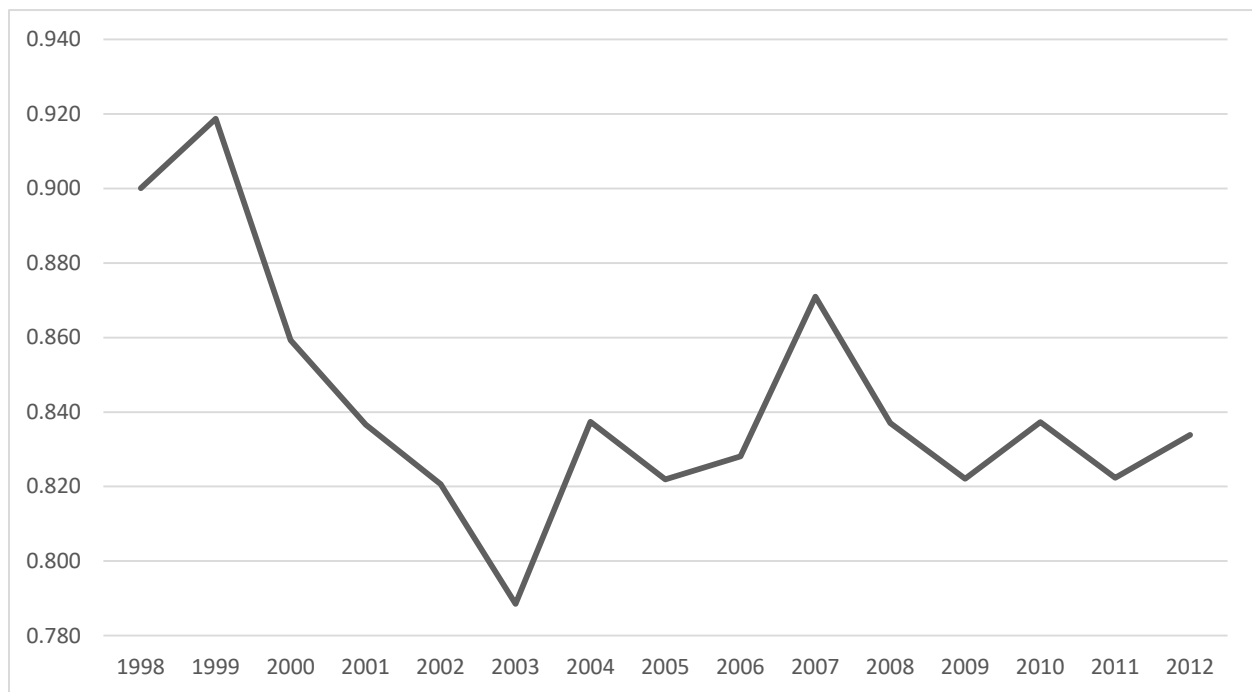




**FIGURE 23. WAGE INEQUALITY DECOMPOSITION: WITHIN VERSUS BETWEEN CATEGORIES OF TRADE EXPOSURE–SKILL GROUP IN SERVICES**



**FIGURE 24. SHARE OF WITHIN-TRADE-EXPOSURE-CATEGORY-SKILL-GROUP WAGE INEQUALITY IN TOTAL INEQUALITY IN SERVICES**



**TABLE 1. RELATIVE MEAN LOG WAGE BY SECTOR**

<b>Sector</b>	<b>Description</b>	<b>Freq.</b>	<b>Share</b>	<b>1998–2012 Average Rel. Mean Log Wage</b>
3	Manufacturing	4,822	0.307	–0.062
4	Repair and maintenance services	246	0.016	–0.077
5	Electricity, gas and water supply	164	0.010	0.473
6	Construction	762	0.048	0.107
7	Wholesale and retail sale trade	1,124	0.071	–0.116
8	Hotels and restaurants	360	0.023	–0.451
9	Transport	1,157	0.074	–0.079
10	Post and communication	384	0.024	0.275
11	Financial and insurance services	1,013	0.064	0.313
12	Real estate, rental and leasing activities	517	0.033	–0.541
13	Professional, scientific and technical services	971	0.062	0.044
14	Public admin. and defense; compulsory soc. sec.	1,439	0.092	0.171
16	Education	1,749	0.111	0.240
17	Health and social services	673	0.043	–0.185
19	Other community and personal services	345	0.022	–0.351
<b>TOTAL</b>		<b>15,726</b>	<b>1.000</b>	

- Notes:** 1. The difference between average log wage for each sector relative to overall average log wage for the whole sample averaged over 1998–2012.  
2. The relative mean log wages by sector and year are presented in Figure 2.

**TABLE 2. RELATIVE MEAN LOG WAGE BY EDUCATIONAL ATTAINMENT**

<b>Highest Degree</b>	<b>Freq.</b>	<b>Share</b>	<b>1998–2012 Average Rel. Mean Log Wage</b>
1. No school/elementary	985	0.063	–0.633
2. Middle school	1,506	0.096	–0.394
3. High school	5,812	0.370	–0.091
4. 2-year college	2,510	0.160	0.020
5. University	4,014	0.255	0.295
6. Graduate school	897	0.057	0.508
<b>TOTAL</b>	<b>15,724</b>	<b>1.000</b>	

- Notes:** 1. The difference between average log wage for each educational category relative to overall average log wage for the whole sample averaged over 1998–2012.  
2. The relative mean log wages by educational attainment and year are presented in Figure 7.

**TABLE 3. TRADE-EXPOSURE CATEGORIES IN MANUFACTURING**

<b>ISIC3</b>	<b>Definition</b>	<b>Trade Exposure</b>
11	Growing of crops; market gardening; horticulture	1
12	Farming of animals	4
20	Forestry, logging and related service activities	4
50	Fishing, aquaculture and service activities incidental to fishing	4
101	Mining and agglomeration of hard coal	1
111	Growing of cereals and other crops not elsewhere classified (n.e.c.)	1
120	Mining of uranium and thorium ores	4
131	Mining of iron ores	1
132	Mining of non-ferrous metal ores, except uranium and thorium ores	1
141	Quarrying of stone, sand and clay	4
142	Mining and quarrying n.e.c.	4
151	Production, processing and preservation of meat, fish, fruit, vegetables, oils and fats	2
152	Manufacture of dairy products	4
153	Manufacture of grain mill products, starches and starch products, and prepared animal feeds	4
154	Manufacture of other food products	1
155	Manufacture of beverages	4
160	Manufacture of tobacco products	4
171	Spinning, weaving and finishing of textiles	2
173	Manufacture of knitted and crocheted fabrics and articles	3
172	Manufacture of other textiles	3
181	Manufacture of wearing apparel, except fur apparel	2
182	Dressing and dyeing of fur; manufacture of articles of fur	4
191	Tanning and dressing of leather; manufacture of luggage, handbags, saddlery and harness	3
192	Manufacture of footwear	4
201	Sawmilling and planing of wood	4
202	Manufacture of products of wood, cork, straw and plaiting materials	4
210	Manufacture of paper and paper products	2
221	Publishing	4
222	Printing and service activities related to printing	4
231	Manufacture of coke oven products	4
232	Manufacture of refined petroleum products	2
233	Processing of nuclear fuel	4
241	Manufacture of basic chemicals	2
242	Manufacture of other chemical products	2
243	Manufacture of man-made fibres	3
251	Manufacture of rubber products	3
252	Manufacture of plastics products	2

**TABLE 3. TRADE-EXPOSURE CATEGORIES IN MANUFACTURING (CONT.)**

<b>ISIC3</b>	<b>Definition</b>	<b>Trade Exposure</b>
261	Manufacture of glass and glass products	1
269	Manufacture of non-metallic mineral products n.e.c.	1
271	Manufacture of basic iron and steel	2
272	Manufacture of basic precious and non-ferrous metals	2
281	Manufacture of structural metal products, tanks, reservoirs and steam generators	3
289	Manufacture of other fabricated metal products; metal working service activities	2
291	Manufacture of general purpose machinery	2
292	Manufacture of special purpose machinery	2
293	Manufacture of domestic appliances n.e.c.	3
300	Manufacture of office, accounting and computing machinery	2
311	Manufacture of electric motors, generators and transformers	2
312	Manufacture of electricity distribution and control apparatus	2
313	Manufacture of insulated wire and cable	3
314	Manufacture of accumulators, primary cells and primary batteries	3
315	Manufacture of electric lamps and lighting equipment	4
319	Manufacture of other electrical equipment n.e.c.	2
321	Manufacture of electronic valves and tubes and other electronic components	2
322	Manufacture of television and radio transmitters and apparatus for line telephony and line telegraph	2
323	Manufacture of television and radio receivers, sound or video recording or reproducing apparatus	2
331	Manufacture of medical appliances and instruments and appliances for measuring, checking, testing	2
332	Manufacture of optical instruments and photographic equipment	2
333	Manufacture of watches and clocks	4
341	Manufacture of motor vehicles	2
342	Manufacture of bodies (coachwork) for motor vehicles; manufacture of trailers and semi-trailers	4
343	Manufacture of parts and accessories for motor vehicles and their engines	2
351	Building and repairing of ships and boats	2
352	Manufacture of railway and tramway locomotives and rolling stock	4
353	Manufacture of aircraft and spacecraft	1
359	Manufacture of transport equipment n.e.c.	4
361	Manufacture of furniture	4
369	Manufacturing n.e.c.	2
401	Production, collection and distribution of electricity	4
402	Manufacture of gas; distribution of gaseous fuels through mains	4

**Note:** Manufacturing trade-exposure categories are: 1 = High imports only (above 50<sup>th</sup> percentile of average imports over 1998–2012 of all ISIC 3-digit manufacturing industries); 2 = Both high imports and high exports; 3 = High exports only (> 50<sup>th</sup> percentile); 4 = Other.

**TABLE 4. RELATIVE MEAN LOG WAGE BY TRADE EXPOSURE IN MANUFACTURING**

<b>Trade Exposure</b>	<b>Freq.</b>	<b>Share</b>	<b>1998–2012 Average Rel. Mean Log Wage</b>
1. HiM	190	0.046	–0.1284
2. HiM-HiX	3,099	0.742	–0.0006
3. HiX	345	0.083	0.0001
4. Oth	541	0.130	0.0577
<b>TOTAL</b>	<b>4,175</b>	<b>1.000</b>	

- Notes:** 1. The difference between average log wage for each trade-exposure category relative to overall average log wage for the whole sample of manufacturing sectors averaged over 1998–2012.  
 2. The relative mean log wages by trade exposure and year in manufacturing are presented in Figure 12.

**TABLE 5. TRADE-EXPOSURE CATEGORIES IN SERVICES**

<b>Sector</b>	<b>Description</b>	<b>Trade Exposure</b>
4	Repair and maintenance services	1
6	Construction	2
9	Transport	2
10	Post and communication	1
11	Financial and insurance services	1
13	Professional, scientific and technical services	2
14	Public admin. and defense; compulsory soc. sec.	1
16	Education	1
17	Health and social services	1
19	Other community and personal services	1

- Notes:** 1. Services trade-exposure categories are: 2 = Both high imports and high exports (above 50<sup>th</sup> percentile of average imports and average exports over 1998–2012 of all service sectors); 1 = Other.  
 2. There are no service sectors in which imports are above the 50<sup>th</sup> percentile while exports are not, and vice versa.

**TABLE 6. RELATIVE MEAN LOG WAGE BY TRADE EXPOSURE IN SERVICES**

<b>Trade Exposure</b>	<b>Freq.</b>	<b>Share</b>	<b>1998–2012 Average Rel. Mean Log Wage</b>
1. Other	5,849	0.669	0.041
2. High	2,890	0.331	-0.083
TOTAL	8,739	1.000	

- Notes:** 1. The difference between average log wage for each trade-exposure category relative to overall average log wage for the whole sample of service sectors averaged over 1998–2012.
2. The relative mean log wages by trade exposure and year in services are presented in Figure 17.

**TABLE A1. CORRESPONDENCE BETWEEN KSIC 2-DIGIT INDUSTRIES AND AGGREGATE SECTORS**

<b>KSIC 2dig</b>	<b>KSIC 2-Digit Industry Definition</b>	<b>Sector</b>	<b>Sector Definition</b>
1	Agriculture	1	Agriculture, hunting, forestry and fishing
2	Forestry	1	Agriculture, hunting, forestry and fishing
5	Fishing	1	Agriculture, hunting, forestry and fishing
10	Mining of Coal, Crude Petrol. and Natural Gas, Uranium and Thorium Ores	2	Mining and quarrying
11	Mining of Metal Ores	2	Mining and quarrying
12	Mining of Non-metallic Minerals, except Fuel	2	Mining and quarrying
15	Manufacture of Food Products and Beverages	3	Manufacturing
16	Manufacture of Tobacco Products	3	Manufacturing
17	Manufacture of Textiles, except Sewn Wearing Apparel	3	Manufacturing
18	Manufacture of Sewn Wearing Apparel and Fur Articles	3	Manufacturing
19	Tanning and Dressing of Leather, Manufacture of Luggage and Footwear	3	Manufacturing
20	Manufacture of Wood and of Products of Wood and Cork, except Furniture	3	Manufacturing
21	Manufacture of Pulp, Paper and Paper Products	3	Manufacturing
22	Publishing, Printing and Reproduction of Recorded Media	3	Manufacturing
23	Manufacture of Coke, Refined Petroleum Products and Nuclear Fuel	3	Manufacturing
24	Manufacture of Chemicals and Chemical Products	3	Manufacturing
25	Manufacture of Rubber and Plastic Products	3	Manufacturing
26	Manufacture of Other Non-metallic Mineral Products	3	Manufacturing
27	Manufacture of Basic Metals	3	Manufacturing
28	Manufacture of Fabricated Metal Products, except Machinery and Furniture	3	Manufacturing
29	Manufacture of Other Machinery and Equipment	3	Manufacturing
30	Manufacture of Computers and Office Machinery	3	Manufacturing
31	Manufacture of Electrical Machinery and Apparatuses n.e.c.	3	Manufacturing
32	Manuf. of Electr. Components, Radio, TV and Communication Equip.	3	Manufacturing
33	Manuf. of Medical, Precision and Optical Instruments, Watches and Clocks	3	Manufacturing
34	Manufacture of Motor Vehicles, Trailers and Semitrailers	3	Manufacturing
35	Manufacture of Other Transport Equipment	3	Manufacturing
36	Manufacture of Furniture; Manufacturing of Articles n.e.c.	3	Manufacturing
92	Maintenance and Repair Services	4	Repair and maintenance services
40	Electricity, Gas, Steam and Hot Water Supply	5	Electricity, gas and water supply
41	Collection, Purification and Distribution of Water	5	Electricity, gas and water supply

**TABLE A1. CORRESPONDENCE BETWEEN KSIC 2-DIGIT INDUSTRIES AND AGGREGATE SECTORS (CONT.)**

<b>KSIC 2dig</b>	<b>KSIC 2-Digit Industry Definition</b>	<b>Sector</b>	<b>Sector Definition</b>
45	General Construction	6	Construction
46	Special Trade Construction	6	Construction
50	Sale of Motor Vehicles and Motorcycles; Retail Sale of Automotive Fuel	7	Wholesale and retail sale trade
51	Wholesale Trade and Commission Trade, exc. of Motor Vehic./Motorcycles	7	Wholesale and retail sale trade
52	Retail Trade, except Motor Vehicles and Motorcycles	7	Wholesale and retail sale trade
55	Hotels and Restaurants	8	Hotels and restaurants
60	Land Transport; Transport via Pipelines	9	Transport
61	Water Transport	9	Transport
62	Air Transport	9	Transport
63	Supporting and Auxiliary Transport Activities; Activities of Travel Agencies	9	Transport
64	Post and Telecommunications	10	Post and communication
65	Financial Institutions, except Insurance and Pension Funding	11	Financial and insurance services
66	Insurance and Pension Funding, except Compulsory Social Security	11	Financial and insurance services
67	Activities Auxiliary to Financial Intermediation	11	Financial and insurance services
70	Real Estate Activities	12	Real estate, rental and leasing activities
71	Renting of Mach./Equip. w/o Operator and of Personal and HH Goods	12	Real estate, rental and leasing activities
72	Computer and Related Activities	13	Professional, scientific and technical services
73	Research and Development	13	Professional, scientific and technical services
74	Professional, Scientific and Technical Services	13	Professional, scientific and technical services
75	Business Support Services	13	Professional, scientific and technical services
76	Public Administration and Defense; Compulsory Social Security	14	Public admin. and defense; compulsory soc. sec.
37	Recycling	15	Water supply; sewage, waste manag./remed.
90	Sewage and Refuse Disposal, Sanitation and Similar Activities	15	Water supply; sewage, waste manag./remed.
80	Education	16	Education
85	Human Health and Veterinary Activities	17	Health and social services
86	Social Work Activities	17	Health and social services
87	Motion Picture, Broadcasting and Performing Arts Industries	18	Arts, entertainment and recreation
88	Other Recreational, Cultural and Sporting Activities	18	Arts, entertainment and recreation
91	Membership Organizations n.e.c.	19	Other community and personal services
93	Other Services Activities	19	Other community and personal services
95	Private Households with Employed Persons	20	Private households with employed persons
99	Extra-Territorial Organizations and Bodies	21	Extra-territorial organizations and bodies



## Working Paper Series

<i>Category</i>	<i>Serial #</i>	<i>Author</i>	<i>Title</i>
Working Paper	99-01	Se-II Park	Labor Market Policy and The Social Safety Net in Korea: After 1997 Crisis
Working Paper	99-02	Sang-Woo Nam	Korea's Economic Crisis and Corporate Governance
Working Paper	99-03	Sangmoon Hahm	Monetary Bands and Monetary Neutrality
Working Paper	99-04	Jong-II You Ju-Ho Lee	Economic and Social Consequences of globalization: The Case of South Korea
Working Paper	99-05	Sang-Woo Nam	Reform of the Financial Sector in East Asia
Working Paper	99-06	Hun-Joo Park	Dirigiste Modernization, Coalition Politics, and Financial Policy Towards Small Business: Korea, Japan, and Taiwan Compared
Working Paper	99-07	Kong-Kyun Ro	Mother's Education and Child's Health: Economic Anlaysia of Korean Data
Working Paper	99-08	Euysung Kim	Trade Liberalization and Productivity Growth in Korean Manufacturing Industries: Price Protection, Market Power, and Scale Efficiency
Working Paper	99-09	Gill-Chin Lim	Global Political-Economic System and Financial Crisis: Korea, Brazil and the IMF
Working Paper	99-10 (C99-01)	Seung-Joo Lee	LG Household & Health Care: Building a High-Performing Organization
Working Paper	00-01	Sangmoon Hahm Kyung-Soo Kim Ho-Mou Wu	Gains from Currency Convertibility: A Case of Incomplete Markets
Working Paper	00-02	Jong-II You	The Bretton Woods Institutions: Evolution, Reform and Change
Working Paper	00-03	Dukgeun Ahn	Linkages between International Financial and Trade Institutions: IMF, World Bank and WTO
Working Paper	00-04	Woochan Kim	Does Capital Account Liberalization Discipline Budget Deficit?
Working Paper	00-05	Sunwoong Kim Shale Horowitz	Public Interest "blackballing" in South Korea's Elections: One-Trick Pony, or Wave of the Future?
Working Paper	00-06	Woochan Kim	Do Foreign Investors Perform Better than Locals? Information Asymmetry versus Investor Sophistication
Working Paper	00-07	Gill-Chin Lim Joon Han	North-South Cooperation for Food Supply: Demographic Analysis and Policy Directions
Working Paper	00-08 (C00-01)	Seung-Joo Lee	Strategic Newspaper Management: Case Study of Maelil Business
Working Paper	01-01	Seung-Joo Lee	Nokia: Strategic Transformation and Growth
Working Paper	01-02	Woochan Kim Shang-Jin Wei	Offshore Investment Funds: Monsters in Emerging Markets?
Working Paper	01-03	Dukgeun Ahn	Comparative Analysis of the SPS and the TBT Agreements
Working Paper	01-04	Sunwoong Kim Ju-Ho Lee	Demand for Education and Developmental State: Private Tutoring in South Korea
Working Paper	01-05	Ju-Ho Lee Young-Kyu Moh Dae-II Kim	Do Unions Inhibit Labor Flexibility? Lessons from Korea
Working Paper	01-06	Woochan Kim Yangho Byeon	Restructuring Korean Bank's Short-Term Debts in 1998 - Detailed Accounts and Their Implications -
Working Paper	01-07	Yoon-Ha YOO	Private Tutoring as Rent Seeking Activity Under Tuition Control

\* The above papers are available at KDI School Website <<http://www.kdischool.ac.kr/new/eng/faculty/working.jsp>>. You may get additional copy of the documents by downloading it using the Acrobat Reader.

## Working Paper Series

Category	Serial #	Author	Title
Working Paper	01-08	Kong-Kyun Ro	경제활동인구 변동의 요인분석: 선진국과의 비교분석
Working Paper	02-01	Sangmoon Hahm	Restructuring of the Public Enterprise after the Crisis: The Case of Deposit Insurance Fund
Working Paper	02-02	Kyong-Dong KIM	The Culture of Industrial Relations in Korea: An alternative Sociological Approach
Working Paper	02-03	Dukgeun Ahn	Korean Experience of the Dispute Settlement in the world Trading System
Working Paper	02-04	BERNARD S. BLACK Hasung Jang Woochan Kim	Does Corporate Governance Matter? (Evidence from the Korean Market)
Working Paper	02-05	Sunwoong Kim Ju-Ho Lee	Secondary School Equalization Policies in South Korea
Working Paper	02-06	Yoon-Ha YOO	Penalty for Mismatch Between Ability and Quality, and School Choice
Working Paper	02-07	Dukgeun Ahn Han-Young Lie	Legal Issues of Privatization in Government Procurement Agreements: Experience of Korea from Bilateral and WTO Agreements
Working Paper	02-08	David J. Behling Kyong Shik Eom	U.S. Mortgage Markets and Institutions and Their Relevance for Korea
Working Paper	03-01	Sang-Moon Hahm	Transmission of Stock Returns and Volatility: the Case of Korea
Working Paper	03-02	Yoon Ha Yoo	Does Evidentiary Uncertainty Induce Excessive Injurer Care?
Working Paper	03-03	Yoon Ha Yoo	Competition to Enter a Better School and Private Tutoring
Working Paper	03-04	Sunwoong Kim Ju-Ho Lee	Hierarchy and Market Competition in South Korea's Higher Education Sector
Working Paper	03-05	Chul Chung	Factor Content of Trade: Nonhomothetic Preferences and "Missing Trade"
Working Paper	03-06	Hun Joo Park	RECASTING KOREAN <i>DIRIGISME</i>
Working Paper	03-07	Taejong Kim Ju-Ho Lee Young Lee	Mixing <i>versus</i> Sorting in Schooling: Evidence from the Equalization Policy in South Korea
Working Paper	03-08	Naohito Abe	Managerial Incentive Mechanisms and Turnover of Company Presidents and Directors in Japan
Working Paper	03-09	Naohito Abe Noel Gaston Katsuyuki Kubo	EXECUTIVE PAY IN JAPAN: THE ROLE OF BANK-APPOINTED MONITORS AND THE MAIN BANK RELATIONSHIP
Working Paper	03-10	Chai-On Lee	Foreign Exchange Rates Determination in the light of Marx's Labor-Value Theory
Working Paper	03-11	Taejong Kim	Political Economy and Population Growth in Early Modern Japan
Working Paper	03-12	Il-Horn Hann Kai-Lung Hui Tom S. Lee I.P.L. Png	Direct Marketing: Privacy and Competition
Working Paper	03-13	Marcus Noland	RELIGION, CULTURE, AND ECONOMIC PERFORMANCE
Working Paper	04-01	Takao Kato Woochan Kim Ju Ho Lee	EXECUTIVE COMPENSATION AND FIRM PERFORMANCE IN KOREA
Working Paper	04-02	Kyoung-Dong Kim	Korean Modernization Revisited: An Alternative View from the Other Side of History

\* The above papers are available at KDI School Website <<http://www.kdischool.ac.kr/new/eng/faculty/working.jsp>>. You may get additional copy of the documents by downloading it using the Acrobat Reader.

## Working Paper Series

<i>Category</i>	<i>Serial #</i>	<i>Author</i>	<i>Title</i>
Working Paper	04-03	Lee Seok Hwang	Ultimate Ownership, Income Management, and Legal and Extra-Legal Institutions
Working Paper	04-04	Dongsoo Kang	Key Success Factors in the Revitalization of Distressed Firms: A Case of the Korean Corporate Workouts
Working Paper	04-05	Il Chong Nam Woochan Kim	Corporate Governance of Newly Privatized Firms: The Remaining Issues in Korea
Working Paper	04-06	Hee Soo Chung Jeong Ho Kim Hyuk Il Kwon	Housing Speculation and Housing Price Bubble in Korea
Working Paper	04-07	Yoon-Ha Yoo	Uncertainty and Negligence Rules
Working Paper	04-08	Young Ki Lee	Pension and Retirement Fund Management
Working Paper	04-09	Wooheon Rhee Tack Yun	Implications of Quasi-Geometric Discounting on the Observable Sharp $e$ Ratio
Working Paper	04-10	Seung-Joo Lee	Growth Strategy: A Conceptual Framework
Working Paper	04-11	Boon-Young Lee Seung-Joo Lee	Case Study of Samsung's Mobile Phone Business
Working Paper	04-12	Sung Yeung Kwack Young Sun Lee	What Determines Saving Rate in Korea?: the Role of Demography
Working Paper	04-13	Ki-Eun Rhee	Collusion in Repeated Auctions with Externalities
Working Paper	04-14	Jaeun Shin Sangho Moon	IMPACT OF DUAL ELIGIBILITY ON HEALTHCARE USE BY MEDICARE BENEFICIARIES
Working Paper	04-15	Hun Joo Park Yeun-Sook Park	Riding into the Sunset: The Political Economy of Bicycles as a Declining Industry in Korea
Working Paper	04-16	Woochan Kim Hasung Jang Bernard S. Black	Predicting Firm's Corporate Governance Choices: Evidence from Korea
Working Paper	04-17	Tae Hee Choi	Characteristics of Firms that Persistently Meet or Beat Analysts' Forecasts
Working Paper	04-18	Taejong Kim Yoichi Okita	Is There a Premium for Elite College Education: Evidence from a Natural Experiment in Japan
Working Paper	04-19	Leonard K. Cheng Jae Nahm	Product Boundary, Vertical Competition, and the Double Mark-up Problem
Working Paper	04-20	Woochan Kim Young-Jae Lim Taeyoon Sung	What Determines the Ownership Structure of Business Conglomerates?: On the Cash Flow Rights of Korea's Chaebol
Working Paper	04-21	Taejong Kim	Shadow Education: School Quality and Demand for Private Tutoring in Korea
Working Paper	04-22	Ki-Eun Rhee Raphael Thomadsen	Costly Collusion in Differentiated Industries
Working Paper	04-23	Jaeun Shin Sangho Moon	HMO plans, Self-selection, and Utilization of Health Care Services
Working Paper	04-24	Yoon-Ha Yoo	Risk Aversion and Incentive to Abide By Legal Rules
Working Paper	04-25	Ji Hong Kim	Speculative Attack and Korean Exchange Rate Regime
Working Paper	05-01	Woochan Kim Taeyoon Sung	What Makes Firms Manage FX Risk? : Evidence from an Emerging Market
Working Paper	05-02	Janghyuk Lee Laoucine Kerbache	Internet Media Planning: An Optimization Model
Working Paper	05-03	Kun-Ho Lee	Risk in the Credit Card Industry When Consumer Types are Not Observable
Working Paper	05-04	Kyong-Dong KIM	Why Korea Is So Prone To Conflict: An Alternative Sociological Analysis

\* The above papers are available at KDI School Website <<http://www.kdischool.ac.kr/new/eng/faculty/working.jsp>>. You may get additional copy of the documents by downloading it using the Acrobat Reader.

## Working Paper Series

<i>Category</i>	<i>Serial #</i>	<i>Author</i>	<i>Title</i>
Working Paper	05-05	Dukgeun AHN	Why Should Non-actionable Subsidy Be Non-actionable?
Working Paper	05-06	Seung-Joo LEE	Case Study of L'Oréal: Innovation and Growth Strategy
Working Paper	05-07	Seung-Joo LEE	Case Study of BMW: The Ultimate Driving Machine
Working Paper	05-08	Taejong KIM	Do School Ties Matter? Evidence from the Promotion of Public Prosecutors in Korea
Working Paper	05-09	Hun Joo PARK	Paradigms and Fallacies: Rethinking Northeast Asian Security
Working Paper	05-10	WOOCHAN KIM TAEYOON SUNG	What Makes Group-Affiliated Firms Go Public?
Working Paper	05-11	BERNARD S. BLACK WOOCHAN KIM HASUNG JANG KYUNG-SUH PARK	Does Corporate Governance Predict Firms' Market Values? Time Series Evidence from Korea
Working Paper	05-12	Kun-Ho Lee	Estimating Probability of Default For the Foundation IRB Approach In Countries That Had Experienced Extreme Credit Crises
Working Paper	05-13	Ji-Hong KIM	Optimal Policy Response To Speculative Attack
Working Paper	05-14	Kwon Jung Boon Young Lee	Coupon Redemption Behaviors among Korean Consumers: Effects of Distribution Method, Face Value, and Benefits on Coupon Redemption Rates in Service Sector
Working Paper	06-01	Kee-Hong Bae Seung-Bo Kim Woochan Kim	Family Control and Expropriation of Not-for-Profit Organizations: Evidence from Korean Private Universities
Working Paper	06-02	Jaewn Shin	How Good is Korean Health Care? An International Comparison of Health Care Systems
Working Paper	06-03	Tae Hee Choi	Timeliness of Asset Write-offs
Working Paper	06-04	Jin PARK	Conflict Resolution Case Study: The National Education Information System (NEIS)
Working Paper	06-05	YuSang CHANG	DYNAMIC COMPETITIVE PARADIGM OF MANAGING MOVING TARGETS; IMPLICATIONS FOR KOREAN INDUSTRY
Working Paper	06-06	Jin PARK	A Tale of Two Government Reforms in Korea
Working Paper	06-07	Ilho YOO	Fiscal Balance Forecast of Cambodia 2007-2011
Working Paper	06-08	Ilho YOO	PAYG pension in a small open economy
Working Paper	06-09	Kwon JUNG Clement LIM	IMPULSE BUYING BEHAVIORS ON THE INTERNET
Working Paper	06-10	Joong H. HAN	Liquidation Value and Debt Availability: An Empirical Investigation
Working Paper	06-11	Brandon Julio, Woojin Kim Michael S. Weisbach	Uses of Funds and the Sources of Financing: Corporate Investment and Debt Contract Design
Working Paper	06-12	Hun Joo Park	Toward People-centered Development: A Reflection on the Korean Experience
Working Paper	06-13	Hun Joo Park	The Perspective of Small Business in South Korea
Working Paper	06-14	Younguck KANG	Collective Experience and Civil Society in Governance
Working Paper	06-15	Dong-Young KIM	The Roles of Government Officials as Policy Entrepreneurs in Consensus Building Process
Working Paper	06-16	Ji Hong KIM	Military Service : draft or recruit

\* The above papers are available at KDI School Website <<http://www.kdischool.ac.kr/new/eng/faculty/working.jsp>>. You may get additional copy of the documents by downloading it using the Acrobat Reader.

## Working Paper Series

<i>Category</i>	<i>Serial #</i>	<i>Author</i>	<i>Title</i>
Working Paper	06-17	Ji Hong KIM	Korea-US FTA
Working Paper	06-18	Ki-Eun RHEE	Reevaluating Merger Guidelines for the New Economy
Working Paper	06-19	Taejong KIM Ji-Hong KIM Insook LEE	Economic Assimilation of North Korean Refugees in South Korea: Survey Evidence
Working Paper	06-20	Seong Ho CHO	ON THE STOCK RETURN METHOD TO DETERMINING INDUSTRY SUBSTRUCTURE: AIRLINE, BANKING, AND OIL INDUSTRIES
Working Paper	06-21	Seong Ho CHO	DETECTING INDUSTRY SUBSTRUCTURE: - Case of Banking, Steel and Pharmaceutical Industries-
Working Paper	06-22	Tae Hee Choi	Ethical Commitment, Corporate Financial Factors: A Survey Study of Korean Companies
Working Paper	06-23	Tae Hee Choi	Aggregation, Uncertainty, and Discriminant Analysis
Working Paper	07-01	Jin PARK Seung-Ho JUNG	Ten Years of Economic Knowledge Cooperation with North Korea: Trends and Strategies
Working Paper	07-02	BERNARD S. BLACK WOOCHAN KIM	The Effect of Board Structure on Firm Value in an Emerging Market: IV, DiD, and Time Series Evidence from Korea
Working Paper	07-03	Jong Bum KIM	FTA Trade in Goods Agreements: 'Entrenching' the benefits of reciprocal tariff concessions
Working Paper	07-04	Ki-Eun Rhee	Price Effects of Entries
Working Paper	07-05	Tae H. Choi	Economic Crises and the Evolution of Business Ethics in Japan and Korea
Working Paper	07-06	Kwon JUNG Leslie TEY	Extending the Fit Hypothesis in Brand Extensions: Effects of Situational Involvement, Consumer Innovativeness and Extension Incongruity on Evaluation of Brand Extensions
Working Paper	07-07	Younguck KANG	Identifying the Potential Influences on Income Inequality Changes in Korea – Income Factor Source Analysis
Working Paper	07-08	WOOCHAN KIM TAEYOON SUNG SHANG-JIN WEI	Home-country Ownership Structure of Foreign Institutional Investors and Control-Ownership Disparity in Emerging Markets
Working Paper	07-09	Ilho YOO	The Marginal Effective Tax Rates in Korea for 45 Years : 1960-2004
Working Paper	07-10	Jin PARK	Crisis Management for Emergency in North Korea
Working Paper	07-11	Ji Hong KIM	Three Cases of Foreign Investment in Korean Banks
Working Paper	07-12	Jong Bum Kim	Territoriality Principle under Preferential Rules of Origin
Working Paper	07-13	Seong Ho CHO	THE EFFECT OF TARGET OWNERSHIP STRUCTURE ON THE TAKEOVER PREMIUM IN OWNER-MANAGER DOMINANT ACQUISITIONS: EVIDENCE FROM KOREAN CASES
Working Paper	07-14	Seong Ho CHO Bill McKelvey	Determining Industry Substructure: A Stock Return Approach
Working Paper	07-15	Dong-Young KIM	Enhancing BATNA Analysis in Korean Public Disputes
Working Paper	07-16	Dong-Young KIM	The Use of Integrated Assessment to Support Multi-Stakeholder negotiations for Complex Environmental Decision-Making
Working Paper	07-17	Yuri Mansury	Measuring the Impact of a Catastrophic Event: Integrating Geographic Information System with Social Accounting Matrix
Working Paper	07-18	Yuri Mansury	Promoting Inter-Regional Cooperation between Israel and Palestine: A Structural Path Analysis Approach
Working Paper	07-19	Ilho YOO	Public Finance in Korea since Economic Crisis

\* The above papers are available at KDI School Website <<http://www.kdischool.ac.kr/new/eng/faculty/working.jsp>>. You may get additional copy of the documents by downloading it using the Acrobat Reader.

## Working Paper Series

<i>Category</i>	<i>Serial #</i>	<i>Author</i>	<i>Title</i>
Working Paper	07-20	Li GAN Jaeun SHIN Qi LI	Initial Wage, Human Capital and Post Wage Differentials
Working Paper	07-21	Jin PARK	Public Entity Reform during the Roh Administration: Analysis through Best Practices
Working Paper	07-22	Tae Hee Choi	The Equity Premium Puzzle: An Empirical Investigation of Korean Stock Market
Working Paper	07-23	Joong H. HAN	The Dynamic Structure of CEO Compensation: An Empirical Study
Working Paper	07-24	Ki-Eun RHEE	Endogenous Switching Costs in the Face of Poaching
Working Paper	08-01	Sun LEE Kwon JUNG	Effects of Price Comparison Site on Price and Value Perceptions in Online Purchase
Working Paper	08-02	Ilho YOO	Is Korea Moving Toward the Welfare State?: An IECI Approach
Working Paper	08-03	Ilho YOO Inhyouk KOO	DO CHILDREN SUPPORT THEIR PARENTS' APPLICATION FOR THE REVERSE MORTGAGE?: A KOREAN CASE
Working Paper	08-04	Seong-Ho CHO	Raising Seoul's Global Competitiveness: Developing Key Performance Indicators
Working Paper	08-05	Jin PARK	A Critical Review for Best Practices of Public Entities in Korea
Working Paper	08-06	Seong-Ho CHO	How to Value a Private Company? -Case of Miele Korea-
Working Paper	08-07	Yoon Ha Yoo	The East Asian Miracle: Export-led or Investment-led?
Working Paper	08-08	Man Cho	Subprime Mortgage Market: Rise, Fall, and Lessons for Korea
Working Paper	08-09	Woochan KIM Woojin KIM Kap-sok KWON	Value of shareholder activism: evidence from the switchers
Working Paper	08-10	Kun-Ho Lee	Risk Management in Korean Financial Institutions: Ten Years after the Financial Crisis
Working Paper	08-11	Jong Bum KIM	Korea's Institutional Framework for FTA Negotiations and Administration: Tariffs and Rules of Origin
Working Paper	08-12	Yu Sang CHANG	Strategy, Structure, and Channel of Industrial Service Leaders: A Flow Chart Analysis of the Expanded Value Chain
Working Paper	08-13	Younguck KANG	Sensitivity Analysis of Equivalency Scale in Income Inequality Studies
Working Paper	08-14	Younguck KANG	Case Study: Adaptive Implementation of the Five-Year Economic Development Plans
Working Paper	08-15	Joong H. HAN	Is Lending by Banks and Non-banks Different? Evidence from Small Business Financing
Working Paper	08-16	Joong H. HAN	Checking Accounts and Bank Lending
Working Paper	08-17	Seongwuk MOON	How Does the Management of Research Impact the Disclosure of Knowledge? Evidence from Scientific Publications and Patenting Behavior
Working Paper	08-18	Jungho YOO	How Korea's Rapid Export Expansion Began in the 1960s: The Role of Foreign Exchange Rate
Working Paper	08-19	BERNARD S. BLACK WOOCHAN KIM HASUNG JANG KYUNG SUH PARK	How Corporate Governance Affects Firm Value: Evidence on Channels from Korea
Working Paper	08-20	Tae Hee CHOI	Meeting or Beating Analysts' Forecasts: Empirical Evidence of Firms' Characteristics, Persistence Patterns and Post-scandal Changes
Working Paper	08-21	Jaeun SHIN	Understanding the Role of Private Health Insurance in the Universal Coverage System: Macro and Micro Evidence

\* The above papers are available at KDI School Website <<http://www.kdischool.ac.kr/new/eng/faculty/working.jsp>>. You may get additional copy of the documents by downloading it using the Acrobat Reader.



## Working Paper Series

<i>Category</i>	<i>Serial #</i>	<i>Author</i>	<i>Title</i>
Working Paper	08-22	Jin PARK	Indonesian Bureaucracy Reform: Lessons from Korea
Working Paper	08-23	Joon-Kyung KIM	Recent Changes in Korean Households' Indebtedness and Debt Service Capacity
Working Paper	08-24	Yuri Mansury	What Do We Know about the Geographic Pattern of Growth across Cities and Regions in South Korea?
Working Paper	08-25	Yuri Mansury & Jae Kyun Shin	Why Do Megacities Coexist with Small Towns? Historical Dependence in the Evolution of Urban Systems
Working Paper	08-26	Jinsoo LEE	When Business Groups Employ Analysts: Are They Biased?
Working Paper	08-27	Cheol S. EUN Jinsoo LEE	Mean-Variance Convergence Around the World
Working Paper	08-28	Seongwuk MOON	How Does Job Design Affect Productivity and Earnings? Implications of the Organization of Production
Working Paper	08-29	Ja Eun SHIN	Smoking, Time Preference and Educational Outcomes
Working Paper	08-30	Dong Young KIM	Reap the Benefits of the Latecomer: From the story of a political, cultural, and social movement of ADR in US
Working Paper	08-31	Ji Hong KIM	Economic Crisis Management in Korea: 1998 & 2008
Working Paper	08-32	Dong-Young KIM	Civility or Creativity?: Application of Dispute Systems Design (DSD) to Korean Public Controversies on Waste Incinerators
Working Paper	08-33	Ki-Eun RHEE	Welfare Effects of Behavior-Based Price Discrimination
Working Paper	08-34	Ji Hong KIM	State Owned Enterprise Reform
Working Paper	09-01	Yu Sang CHANG	Making Strategic Short-term Cost Estimation by Annualized Experience Curve
Working Paper	09-02	Dong Young KIM	When Conflict Management is Institutionalized: A Review of the Executive Order 19886 and government practice
Working Paper	09-03	Man Cho	Managing Mortgage Credit Risk: What went wrong with the subprime and Alt-A markets?
Working Paper	09-04	Tae H. Choi	Business Ethics, Cost of Capital, and Valuation
Working Paper	09-05	Woochan KIM Woojin KIM Hyung-Seok KIM	What makes firms issue death spirals? A control enhancing story
Working Paper	09-06	Yu Sang CHANG Seung Jin BAEK	Limit to Improvement: Myth or Reality? Empirical Analysis of Historical Improvement on Three Technologies Influential in the Evolution of Civilization
Working Paper	09-07	Ji Hong KIM	G20: Global Imbalance and Financial Crisis
Working Paper	09-08	Ji Hong KIM	National Competitiveness in the Globalized Era
Working Paper	09-09	Hao Jiang Woochan Kim Ramesh K. S. Rao	Contract Heterogeneity, Operating Shortfalls, and Corporate Cash Holdings
Working Paper	09-10	Man CHO	Home Price Cycles: A Tale of Two Countries
Working Paper	09-11	Dongcul CHO	The Republic of Korea's Economy in the Swirl of Global Crisis
Working Paper	09-12	Dongcul CHO	House Prices in ASEAN+3: Recent Trends and Inter-Dependence
Working Paper	09-13	Seung-Joo LEE Eun-Hyung LEE	Case Study of POSCO - Analysis of its Growth Strategy and Key Success Factors

\* The above papers are available at KDI School Website <<http://www.kdischool.ac.kr/new/eng/faculty/working.jsp>>. You may get additional copy of the documents by downloading it using the Acrobat Reader.

## Working Paper Series

<i>Category</i>	<i>Serial #</i>	<i>Author</i>	<i>Title</i>
Working Paper	09-14	Woochan KIM Taeyoon SUNG Shang-Jin WEI	The Value of Foreign Blockholder Activism: Which Home Country Governance Characteristics Matter?
Working Paper	09-15	Joon-Kyung KIM	Post-Crisis Corporate Reform and Internal Capital Markets in Chaebols
Working Paper	09-16	Jin PARK	Lessons from SOE Management and Privatization in Korea
Working Paper	09-17	Tae Hee CHOI	Implied Cost of Equity Capital, Firm Valuation, and Firm Characteristics
Working Paper	09-18	Kwon JUNG	Are Entrepreneurs and Managers Different? Values and Ethical Perceptions of Entrepreneurs and Managers
Working Paper	09-19	Seongwuk MOON	When Does a Firm Seek External Knowledge? Limitations of External Knowledge
Working Paper	09-20	Seongwuk MOON	Earnings Inequality within a Firm: Evidence from a Korean Insurance Company
Working Paper	09-21	Jaeun SHIN	Health Care Reforms in South Korea: What Consequences in Financing?
Working Paper	09-22	Younguck KANG	Demand Analysis of Public Education: A Quest for New Public Education System for Next Generation
Working Paper	09-23	Seong-Ho CHO Jinsoo LEE	Valuation and Underpricing of IPOs in Korea
Working Paper	09-24	Seong-Ho CHO	Kumho Asiana's LBO Takeover on Korea Express
Working Paper	10-01	Yun-Yeong KIM Jinsoo LEE	Identification of Momentum and Disposition Effects Through Asset Return Volatility
Working Paper	10-02	Kwon JUNG	Four Faces of Silver Consumers: A Typology, Their Aspirations, and Life Satisfaction of Older Korean Consumers
Working Paper	10-03	Jinsoo LEE Seongwuk MOON	Corporate Governance and International Portfolio Investment in Equities
Working Paper	10-04	Jinsoo LEE	Global Convergence in Tobin's Q Ratios
Working Paper	10-05	Seongwuk MOON	Competition, Capability Buildup and Innovation: The Role of Exogenous Intra-firm Revenue Sharing
Working Paper	10-06	Kwon JUNG	Credit Card Usage Behaviors among Elderly Korean Consumers
Working Paper	10-07	Yu-Sang CHANG Jinsoo LEE	Forecasting Road Fatalities by the Use of Kinked Experience Curve
Working Paper	10-08	Man CHO	Securitization and Asset Price Cycle: Causality and Post-Crisis Policy Reform
Working Paper	10-09	Man CHO Insik MIN	Asset Market Correlation and Stress Testing: Cases for Housing and Stock Markets
Working Paper	10-10	Yu-Sang CHANG Jinsoo LEE	Is Forecasting Future Suicide Rates Possible? - Application of the Experience Curve -
Working Paper	10-11	Seongwuk MOON	What Determines the Openness of Korean Manufacturing Firms to External Knowledge?
Working Paper	10-12	Joong Ho HAN Kwangwoo PARK George PENNACCHI	Corporate Taxes and Securitization
Working Paper	10-13	Younguck KANG	Housing Policy of Korea: Old Paradigm, New Approach
Working Paper	10-14	Il Chong NAM	A Proposal to Reform the Korean CBP Market
Working Paper	10-15	Younguck KANG	Balanced Regional Growth Strategy based on the Economies of Agglomeration: the Other Side of Story
Working Paper	10-16	Joong Ho HAN	CEO Equity versus Inside Debt Holdings and Private Debt Contracting

\* The above papers are available at KDI School Website <<http://www.kdischool.ac.kr/new/eng/faculty/working.jsp>>. You may get additional copy of the documents by downloading it using the Acrobat Reader.



## Working Paper Series

<i>Category</i>	<i>Serial #</i>	<i>Author</i>	<i>Title</i>
Working Paper	11-01	Yeon-Koo CHE Rajiv SETHI	Economic Consequences of Speculative Side Bets: The Case of Naked Credit Default Swaps
Working Paper	11-02	Tae Hee CHOI Martina SIPKOVA	Business Ethics in the Czech Republic
Working Paper	11-03	Sunwoo HWANG Woochan KIM	Anti-Takeover Charter Amendments and Managerial Entrenchment: Evidence from Korea
Working Paper	11-04	Yu Sang CHANG Jinsoo LEE Yun Seok JUNG	The Speed and Impact of a New Technology Diffusion in Organ Transplantation: A Case Study Approach
Working Paper	11-05	Jin PARK Jiwon LEE	The Direction of Inter-Korean Cooperation Fund Based on ODA Standard
Working Paper	11-06	Woochan KIM	Korea Investment Corporation: Its Origin and Evolution
Working Paper	11-07	Seung-Joo LEE	Dynamic Capabilities at Samsung Electronics: Analysis of its Growth Strategy in Semiconductors
Working Paper	11-08	Joong Ho HAN	Deposit Insurance and Industrial Volatility
Working Paper	11-09	Dong-Young KIM	Transformation from Conflict to Collaboration through Multistakeholder Process: Shihwa Sustainable Development Committee in Korea
Working Paper	11-10	Seongwuk MOON	How will Openness to External Knowledge Impact Service Innovation? Evidence from Korean Service Sector
Working Paper	11-11	Jin PARK	Korea's Technical Assistance for Better Governance: A Case Study in Indonesia
Working Paper	12-01	Seongwuk MOON	How Did Korea Catch Up with Developed Countries in DRAM Industry? The Role of Public Sector in Demand Creation: PART 1
Working Paper	12-02	Yong S. Lee Young U. Kang Hun J Park	The Workplace Ethics of Public Servants in Developing Countries
Working Paper	12-03	Ji-Hong KIM	Deposit Insurance System in Korea and Reform
Working Paper	12-04	Yu Sang Chang Jinsoo Lee Yun Seok Jung	Technology Improvement Rates of Knowledge Industries following Moore's Law? -An Empirical Study of Microprocessor, Mobile Cellular, and Genome Sequencing Technologies-
Working Paper	12-05	Man Cho	Contagious Real Estate Cycles: Causes, Consequences, and Policy Implications
Working Paper	12-06	Younguck KANG Dhani Setvawan	INTERGOVERNMENTAL TRANSFER AND THE FLYPAPER EFFECT – Evidence from Municipalities/Regencies in Indonesia –
Working Paper	12-07	Younguck KANG	Civil Petitions and Appeals in Korea : Investigating Rhetoric and Institutional settings
Working Paper	12-08	Yu Sang Chang Jinsoo Lee	Alternative Projection of the World Energy Consumption -in Comparison with the 2010 International Energy Outlook
Working Paper	12-09	Hyeok Jeong	The Price of Experience
Working Paper	12-10	Hyeok Jeong	Complementarity and Transition to Modern Economic Growth
Working Paper	13-01	Yu Sang CHANG Jinsoo LEE Hyuk Ju KWON	When Will the Millennium Development Goal on Infant Mortality Rate Be Realized? - Projections for 21 OECD Countries through 2050-
Working Paper	13-02	Yoon-Ha Yoo	Stronger Property Rights Enforcement Does Not Hurt Social Welfare -A Comment on Gonzalez' "Effective Property Rights, Conflict and Growth (JET, 2007)"-
Working Paper	13-03	Yu Sang CHANG Changyong CHOI	Will the Stop TB Partnership Targets on TB Control be Realized on Schedule? - Projection of Future Incidence, Prevalence and Death Rates -
Working Paper	13-04	Yu Sang CHANG Changyong CHOI	Can We Predict Long-Term Future Crime Rates? – Projection of Crime Rates through 2030 for Individual States in the U.S. –

\* The above papers are available at KDI School Website <<http://www.kdischool.ac.kr/new/eng/faculty/working.jsp>>. You may get additional copy of the documents by downloading it using the Acrobat Reader.

## Working Paper Series

<i>Category</i>	<i>Serial #</i>	<i>Author</i>	<i>Title</i>
Working Paper	13-05	Chrysostomos Tabakis	Free-Trade Areas and Special Protection
Working Paper	13-06	Hyeok Jeong	Dynamics of Firms and Trade in General Equilibrium
Working Paper	13-07	Hyeok Jeong	Testing Solow's Implications on the Effective Development Policy
Working Paper	13-08	Jaeun SHIN	Long-Term Care Insurance and Health Care Financing in South Korea
Working Paper	13-09	Ilchong Nam	Investment Incentives for Nuclear Generators and Competition in the Electricity Market of Korea
Working Paper	13-10	Ilchong Nam	Market Structure of the Nuclear Power Industry in Korea and Incentives of Major Firms
Working Paper	13-11	Ji Hong KIM	Global Imbalances
Working Paper	14-01	Woochan KIM	When Heirs Become Major Shareholders
Working Paper	14-02	Chrysostomos Tabakis	Antidumping Echoing
Working Paper	14-03	Ju Ho Lee	Is Korea Number One in Human Capital Accumulation?: Education Bubble Formation and its Labor Market Evidence
Working Paper	14-04	Chrysostomos Tabakis	Regionalism and Conict: Peace Creation and Peace Diversion
Working Paper	14-05	Ju Ho Lee	Making Education Reform Happen: Removal of Education Bubble through Education Diversification
Working Paper	14-06	Sung Joon Paik	Pre-employment VET Investment Strategy in Developing Countries - Based on the Experiences of Korea -
Working Paper	14-07	Ju Ho Lee Josh Sung-Chang Ryoo Sam-Ho Lee	From Multiple Choices to Performance Assessment: Theory, Practice, and Strategy
Working Paper	14-08	Sung Joon Paik	Changes in the effect of education on the earnings differentials between men and women in Korea (1990-2010)
Working Paper	14-09	Shun Wang	Social Capital and Rotating Labor Associations: Evidence from China
Working Paper	14-10	Hun Joo Park	Recasting the North Korean Problem: Towards Critically Rethinking about the Perennial Crisis of the Amoral Family State and How to Resolve It
Working Paper	14-11	Yooncheong Cho	Justice, Dissatisfaction, and Public Confidence in the E-Governance)
Working Paper	14-12	Shun Wang	The Long-Term Consequences of Family Class Origins in Urban China
Working Paper	14-13	Jisun Baek	Effect of High-speed Train Introduction on Consumer Welfare
Working Paper	14-14	Jisun Baek	Effect of High Speed Trains on Passenger Travel: Evidence from Korea
Working Paper	15-01	Tae-Hee Choi	Governance and Business Ethics - An International Analysis
Working Paper	15-02	Jisun Baek	The Impact of Improved Passenger Transport System on Manufacturing Plant Productivity
Working Paper	15-03	Shun Wang	The Unintended Long-term Consequences of Mao's Mass Send-Down Movement: Marriage, Social Network, and Happiness
Working Paper	15-04	Changyong Choi	Information and Communication Technology and the Authoritarian Regime: A Case Study of North Korea
Working Paper	15-05	Wonhyuk Lim William P. Mako	AIIB Business Strategy Decisions: What Can It Do Differently to Make a Difference?

\* The above papers are available at KDI School Website <<http://www.kdischool.ac.kr/new/eng/faculty/working.jsp>>. You may get additional copy of the documents by downloading it using the Acrobat Reader.

## Working Paper Series

<i>Category</i>	<i>Serial #</i>	<i>Author</i>	<i>Title</i>
Working Paper	15-06	Ju-Ho Lee Kiwan Kim Song-Chang Hong JeeHee Yoon	Can Bureaucrats Stimulate High-Risk High-Payoff Research?
Working Paper	15-07	Seulki Choi	Geographical Proximity with Elderly Parents of Korean Married Women in 30-40s
Working Paper	15-08	Taejun Lee	An Analysis of Retirement Financial Service Providers' Approach to Using Websites to Augment Consumer Financial Acumen
Working Paper	15-09	Sung Joon Paik	Education and Inclusive Growth – Korean Experience
Working Paper	15-10	Sung Joon Paik	Policies to Attract High Quality Foreign Students into Korea
Working Paper	15-11	Changyong Choi June Mi Kang	한·중 ODA 전략 비교 분석: 지식공유사업(KSP) 사례연구
Working Paper	15-12	WooRam Park Jisun Baek	Firm's Employment Adjustment in Response to Labor Regulation
Working Paper	15-13	Jisun Baek WooRam Park	Higher Education, Productivity Revelation and Performance Pay Jobs
Working Paper	15-14	Sung Joon Paik	고급 두뇌인력 네트워크 구축·활용 정책 - 국제 사례 분석
Working Paper	15-15	Sunme Lee Yooncheong Cho	Exploring Utility, Attitude, Intention to Use, Satisfaction, and Loyalty in B2C/P2P Car-Sharing Economy
Working Paper	15-16	Chrysostomos Tabakis	Endogenous Sequencing of Tariff Decisions
Working Paper	15-17	Tae Hee Choi	Business Ethics - Evidence from Korea
Working Paper	16-01	Hyeok Jeong Ju-Ho Lee	Korea's Age-Skill Profile from PIAAC: Features and Puzzles
Working Paper	16-02	M. Jae Moon Ju-Ho Lee Jin Park Jieun Chung Jung Hee Choi	Skills and Wages of Public Employees Investigating Korean Bureaucracy through PIAAC
Working Paper	16-03	Taejun Lee	The Role of Psychological Processing and Government-Public Relationship in Managing the Public's Communicative Actions of Problem-Solving
Working Paper	16-04	Shun Wang Wenia Zhou	Do Siblings Make Us Happy?
Working Paper	16-05	Junghee Choi Booyuel Kim Ju-Ho Lee Yoonsoo Park	The Impact of Project-Based Learning on Teacher Self-efficacy
Working Paper	16-06	Hun Joo Park In Wan Cho	Glocalization, Brain Circulation, and Networks: Towards A Fresh Conceptual Framework for Open Human Resource Development System in South Korea
Working Paper	16-07	Changyong Choi Balazs Szalontai	Economic Reform and Export-Oriented Industrialization: An Applicable Model for LDCs?
Working Paper	16-08	Jaehyun Jung Booyuel Kim Hyuncheol Bryant Kim Cristian Pop-Eleches	Long-term Effects of Male Circumcision on Risky Sexual Behaviors and STD Infections: vidence from Malawian Schools
Working Paper	16-09	Ilchong Nam	Collusion in a telecom market in which the entrant raises the price in return for a discount in interconnection charges by the incumbent
Working Paper	16-10	Ji Hong Kim	New Direction of Industrial Policy in Korea
Working Paper	16-11	Ju-Ho Lee Ho-Young Oh Sang Hoon Jee	An Empirical Analysis on the Geography of Korea's High-Tech Jobs and Start-Ups

\* The above papers are available at KDI School Website <<http://www.kdischool.ac.kr/new/eng/faculty/working.jsp>>. You may get additional copy of the documents by downloading it using the Acrobat Reader.

## Working Paper Series

<i>Category</i>	<i>Serial #</i>	<i>Author</i>	<i>Title</i>
Working Paper	16-12	Shun Wang	Business Cycles, Political Connectedness, and Firm Performance in China
Working Paper	16-13	Seulki Choi	A Study on the Korean Family Structure through Daegu Family Registry 1681~1876; Pre-modern Nuclear Family Theory revisited
Working Paper	16-14	Siwook Lee	International Trade and Within-sector Wage Inequality: the Case of South Korea
Working Paper	16-15	Dawoon Jung Booyuel Kim Hyuncheol Kim	The effect of health facility births on newborn mortality in Malawi and Ethiopia
Working Paper	16-16	Booyuel Kim Hyuncheol Kim Cristian Pop-Eleches	Peer Effects in the Demand for Male Circumcision
Working Paper	16-17	Jisun Baek WooRam Park	How Does the Impact of Tobacco Control Policies Change Over Time?: Evidence from South Korea
Working Paper	16-18	Gae Hee Song Soonhee Kim	The Role of NGOs in Settling North Korean Migrants into South Korean Society: Perceived Assistance and Realities
Working Paper	16-19	Soonhee Kim Jooho Lee	Citizen Participation and Transparency in Local Government: Does Online or Offline Participation Matters?
Working Paper	16-20	Junesoo Lee Yvonne D. Harrison David F. Andersen	Nonprofits Dealing with Adversity through Failure Management
Working Paper	16-21	Baybars Karacaovali Chrysostomos Tabakis	Wage Inequality Dynamics and Trade Exposure in South Korea

\* The above papers are available at KDI School Website <<http://www.kdischool.ac.kr/new/eng/faculty/working.jsp>>. You may get additional copy of the documents by downloading it using the Acrobat Reader.